

The logo icon consists of six white geometric shapes: three downward-pointing triangles and three upward-pointing triangles, arranged in two rows of three. The top row has three downward-pointing triangles, and the bottom row has three upward-pointing triangles, creating a stylized 'M' or 'W' shape.

Moldtech

EQUIPMENT FOR PRECAST CONCRETE PLANTS

INDEX

- 1. Definition of our business
- 2. Services
- 3. Key figures
- 4. Featured projects
- 5. Location and contact

Design, manufacturing & installation of **PRECAST CONCRETE EQUIPMENT FOR**

Industrial



Residential



Civil Works



A company committed with
competitiveness, delivery **deadlines** & professional **service**
for **tailor made** projects

INDUSTRIAL

RESIDENTIAL

CIVIL WORKS

INDEX

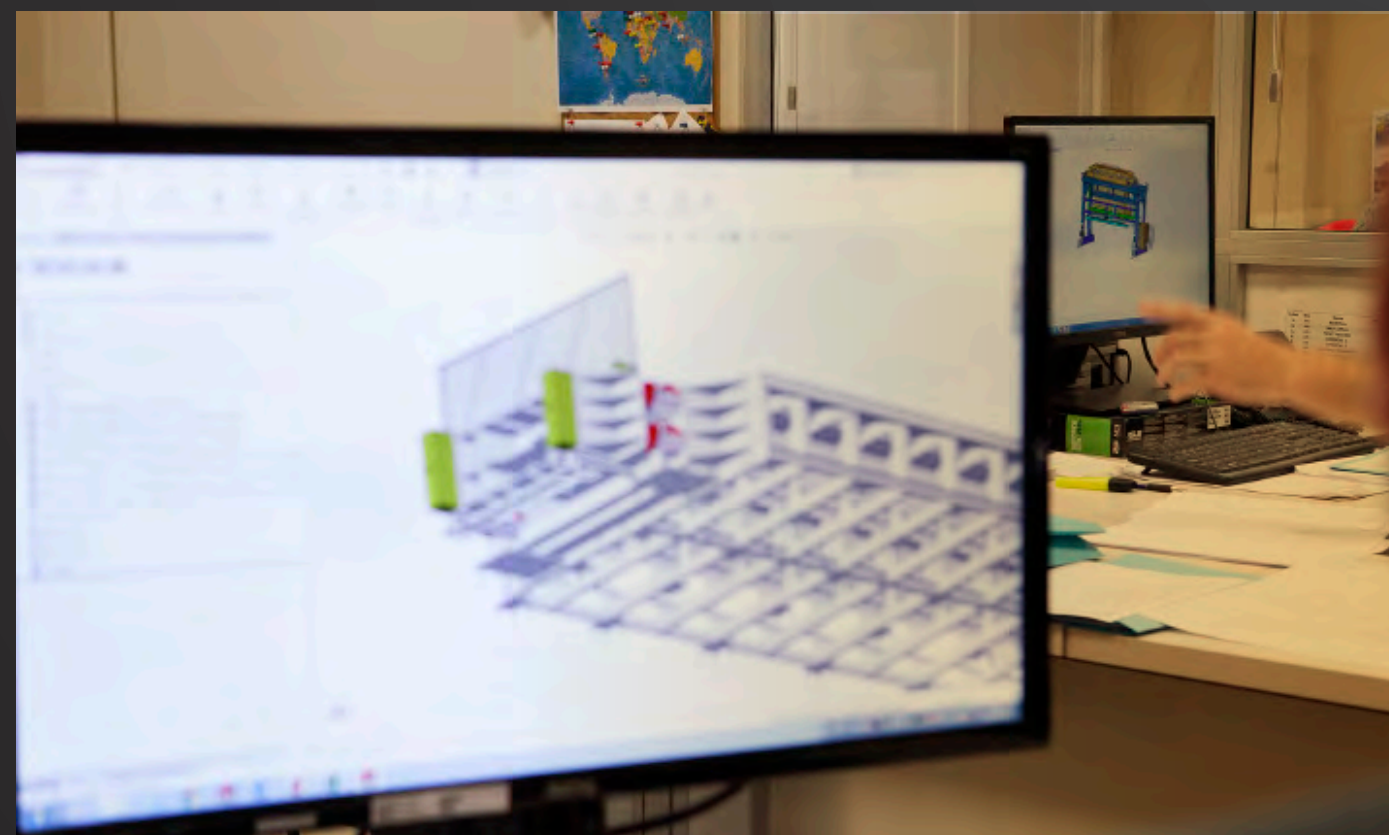
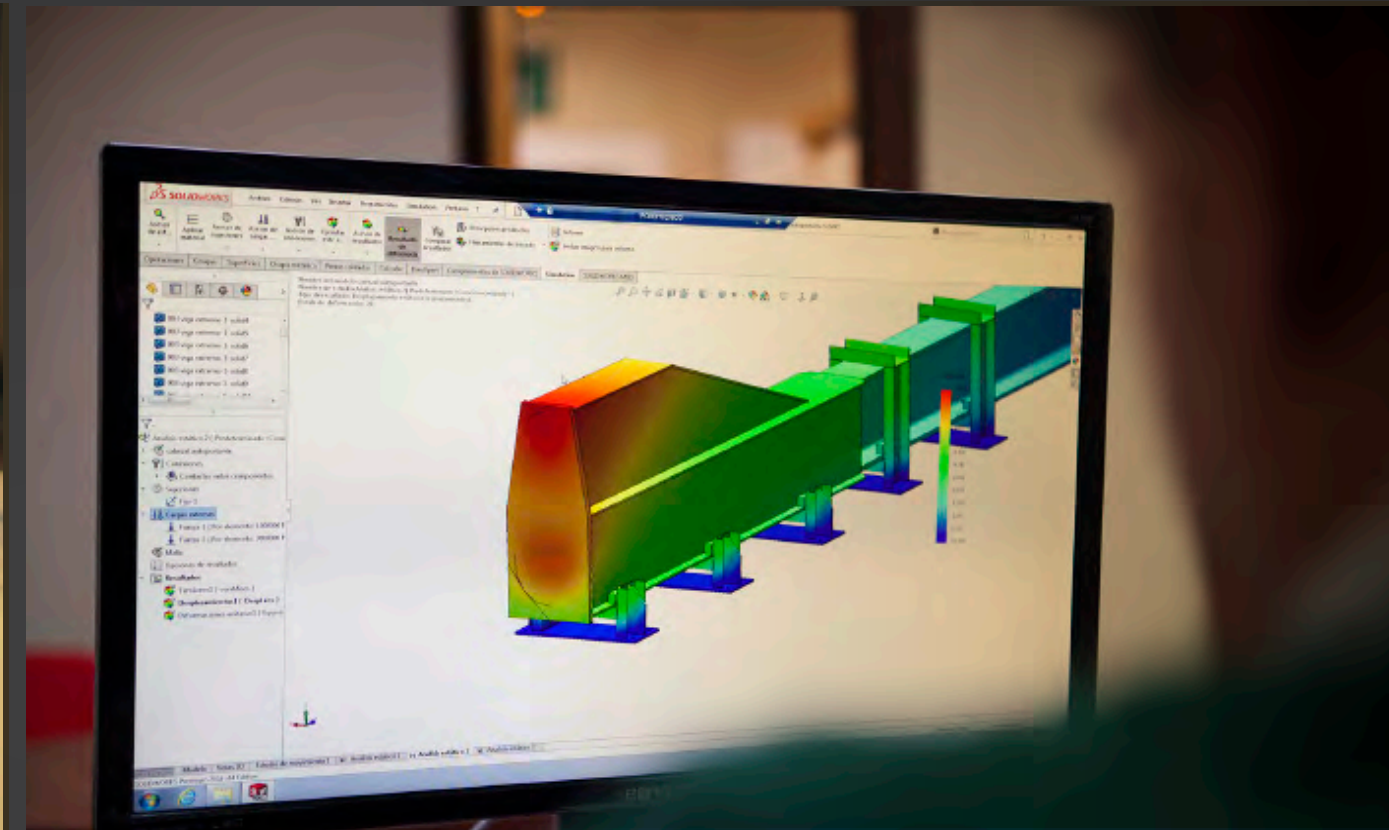
- 1. Definition of our business
- 2. Services
- 3. Key figures
- 4. Featured projects
- 5. Location and contact



INDEX

- 1. Definition of our business
- 2. Services
- 3. Key figures
- 4. Featured projects
- 5. Location and contact

MOLDTECH IS A FAMILY RUN COMPANY ESTABLISHED IN 1986 TO BECOME A WORLDWIDE REFERENCE IN THE PRECAST CONCRETE SECTOR.



WE REINVEST ANNUAL PROFITS TO IMPROVE METHODS, KNOWLEDGE AND CAPACITY TO CONTINUOUSLY STRENGTHEN THE COMPANY.

MODERN FACILITIES + 15,000 SQM

8,000 SQM PRODUCTION 1,500 SQM CNC MACHINES

INDEX

1. Definition of our business
2. Services
3. Key figures
4. Featured projects
5. Location and contact



INDEX

- 1. Definition of our business
- 2. Services
- 3. Key figures
- 4. Featured projects
- 5. Location and contact

MOLDTECH DEVELOPS FLEXIBLE & COMPREHENSIVE PROJECTS
TAILORED TO THE HIGHEST QUALITY, PRODUCTIVITY & SECURITY STANDARDS.



WE STRIVE DAILY
TO SERVE OUR
CUSTOMERS
WITH EFFICACY,
PROACTIVITY AND
PROXIMITY.

INDEX

- 1. Definition of our business
- 2. Services
- 3. Key figures
- 4. Featured projects
- 5. Location and contact

WE OFFER OUR CLIENTS ANY RANGE OF SERVICE STARTING FROM PRELIMINARY MOULD DESIGN TO COMPREHENSIVE TURN KEY PROJECTS FOR PRECAST MANUFACTURING PLANTS INCLUDING COMMISSIONING AND PERSONNEL TRAINING.



COMPREHENSIVE PROJECTS WORLDWIDE

MODERN FACILITIES

+ 15,000 SQM

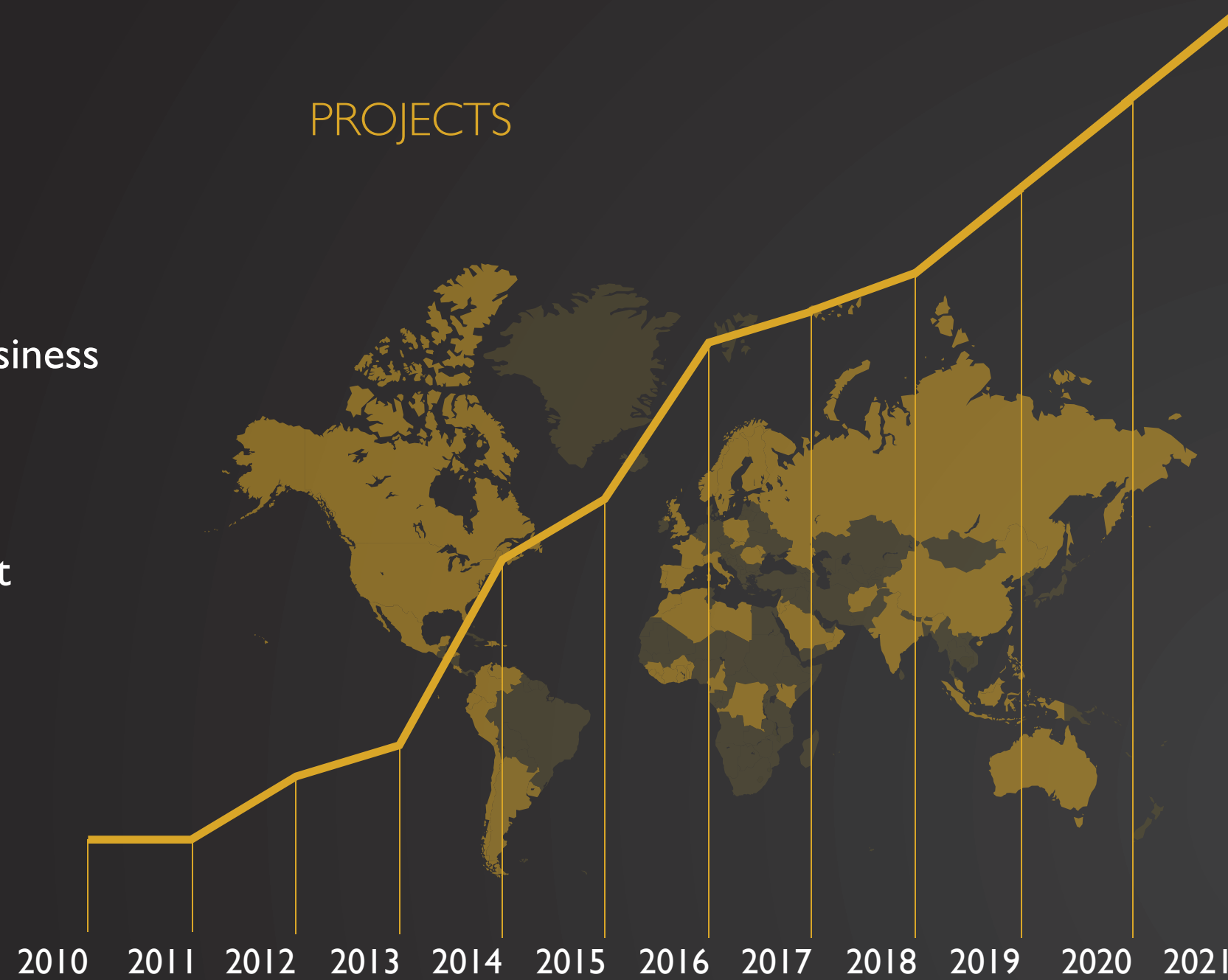
8,000 SQM PRODUCTION
1,500 SQM CNC MACHINES

MULTIDISCIPLINARY EXPERTISE TEAM

INDEX

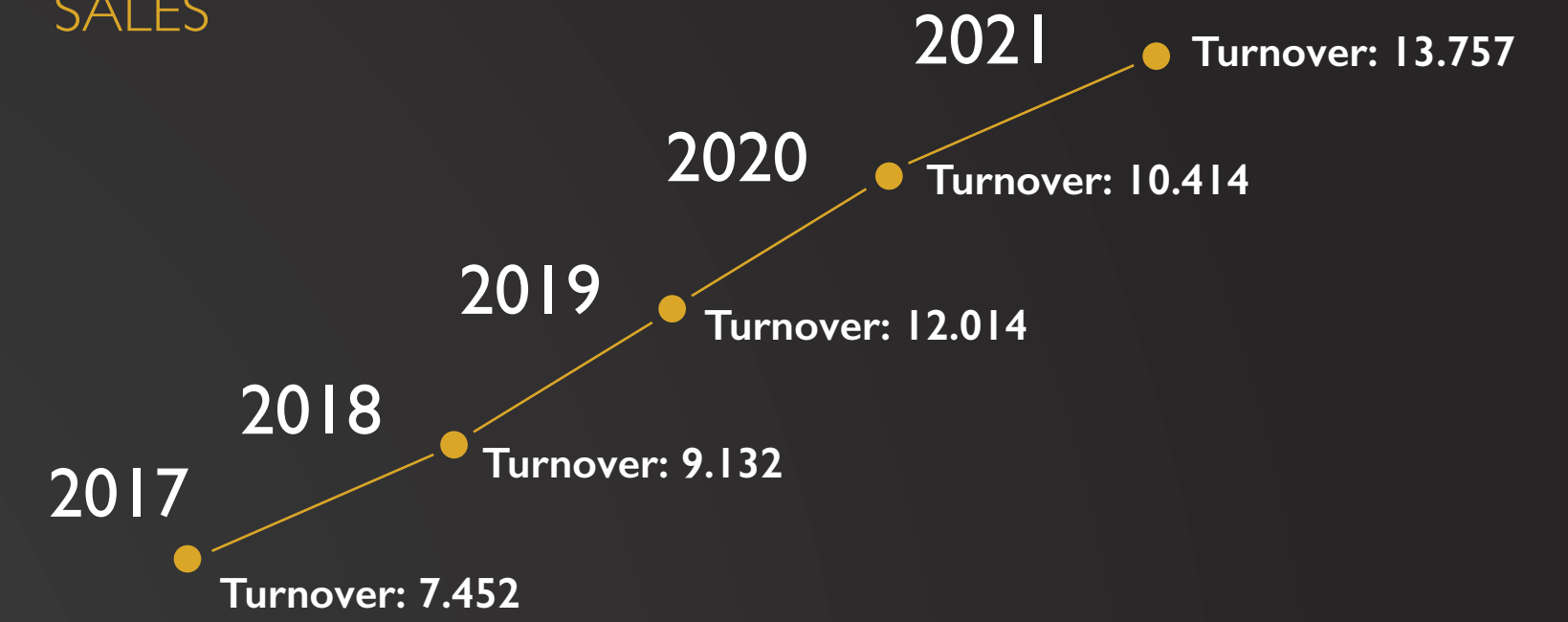
1. Definition of our business
2. Services
3. Key figures
4. Featured projects
5. Location and contact

PROJECTS



SPAIN, FRANCE, PORTUGAL, ITALY, NORWAY, SWEDEN, UNITED KINGDOM, NORTHERN IRELAND, SLOVAKIA, POLAND, ROMANIA, RUSSIA, MOROCCO, ALGERIA, LIBYA, ISRAEL, TOGO, BENIN, CAMERUN, THE CONGO, BURKINA FASO, CHAD, COSTA DE MARFIL, GUINEA, ANGOLA, OMAN, SAUDI ARABIA, INDIA, AFGHANISTAN, SINGAPORE, MALAYSIA, INDONESIA, PHILIPPINES, USA, CANADA, HONDURAS, COSTA RICA, PANAMA, MEXICO, NICARAGUA, COLOMBIA, VENEZUELA, ECUADOR, PERU, CHILE, ARGENTINA, URUGUAY, BOLIVIA, DOMINICAN REPUBLIC, AUSTRALIA, SWITZERLAND.

SALES

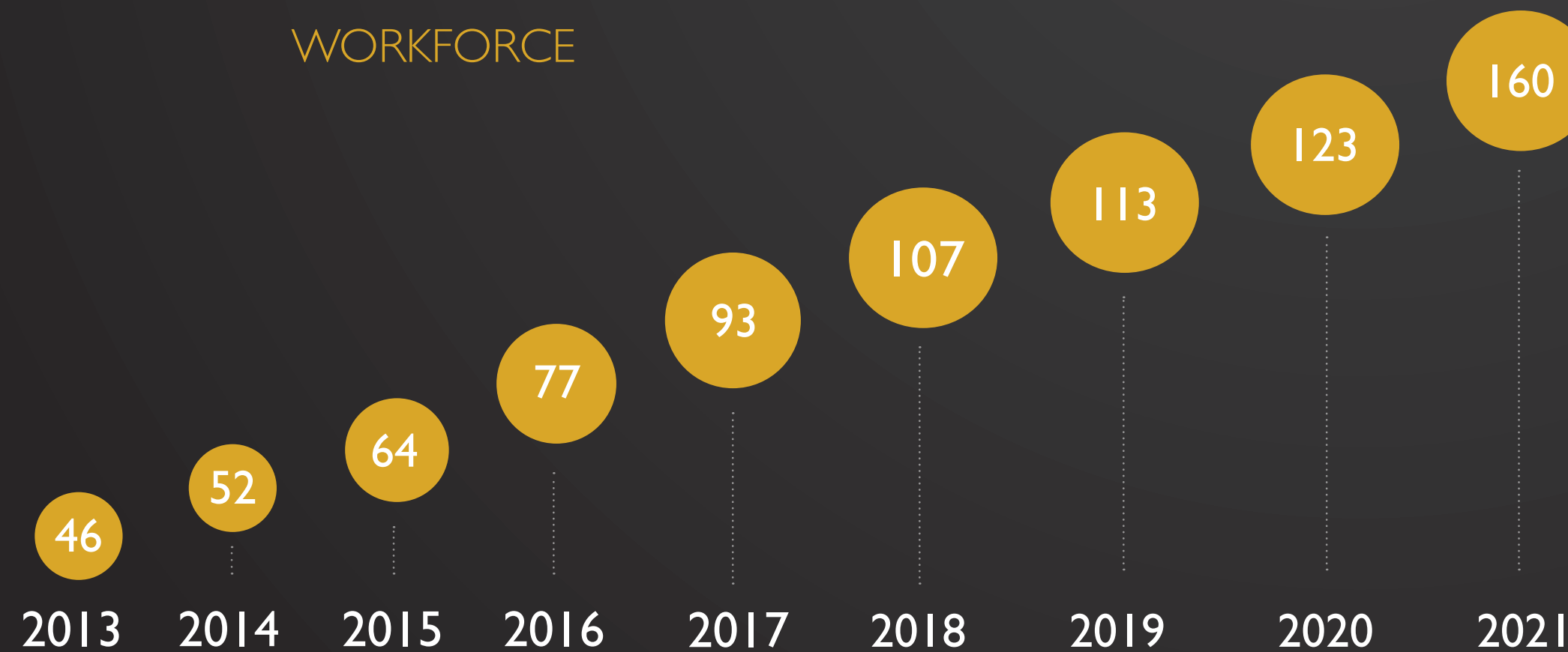


* Data in miles of €

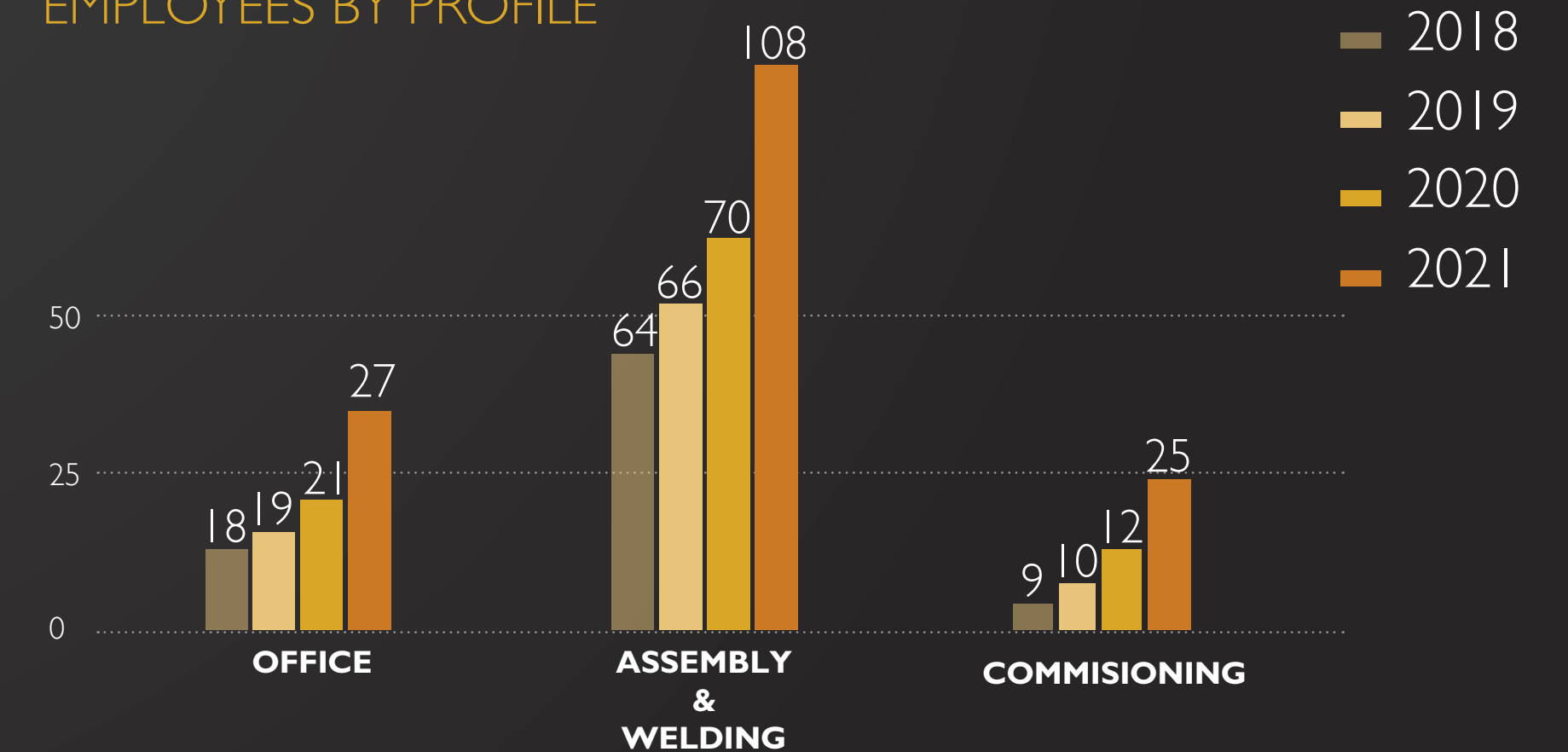
BROAD INTERMAT EXPERIENCE



WORKFORCE



EMPLOYEES BY PROFILE



INDEX

1. Definition of our business
2. Services
3. Key figures
4. **Featured projects**
5. Location and contact

FEATURED PROJECTS

WE EXECUTED MORE THAN 600 PROJECTS DIVIDED OVER MORE THAN 50 COUNTRIES AND IN 5 DIFFERENT CONTINENTS

INDEX

- 1. Definition of our business
- 2. Services
- 3. Key figures
- 4. **Featured projects**
- 5. Location and contact





NEW PRECAST PLANT FOR RABAT AIRPORT

2022 MOROCCO

INDEX

1. Definition of our business
2. Services
3. Key figures
4. Featured projects
5. Location and contact

SUPPLY:



Equipment for the production of precast elements for the construction of the extension of the new Rabat Airport terminal.

100 m long self-stressing 'TT' slab mould.

80 m long universal casting bed with stressing heads for 600 t and mould sides to produce 'L', 'T' and rectangular beams.

Single lane column mold with corbels.

Tilting table.



INDEX

1. Definition of our business
2. Services
3. Key figures
4. Featured projects
5. Location and contact

SUPPLY:



Tilting table of 37 x 3.5 m.

Hydraulic side shutters.

Top shutter with height of 150 mm high and length of 37 m.

Accessories: transversal shutters of different sizes.

Hydraulic control unit.

Pouring bucket of 1.5 m³.

TILTING TABLE

2022 FRANCE



INDEX

1. Definition of our business
2. Services
3. Key figures
4. Featured projects
5. Location and contact

SUPPLY:



A total of 2 tilting tables of 14 x 4.4 m, with bottom and side shutter of 31 cm.

Hydraulic unit to operate 2 tables.

TILTING TABLES

2022 SPAIN



INDEX

1. Definition of our business
2. Services
3. Key figures
4. Featured projects
5. Location and contact

SUPPLY:



Conceived for the construction of residential buildings.

Max. dimensions of 6.55 m length x 3.24 m width x 3.1 m height.

Option to change wall thickness.

Inner core with hydraulic retractable system for rapid demoulding without the need for a conical slope. Production of 4 walls and top slab a monolithic element.

The floor slab is connected at a finishing table, completing its 6 sides.

After this the module is finished on the inside completing installations, finishes and furniture. Then the modules are transported to the building site, where they are structurally connected to each other.

The supply also included the door and windows shutters and two lifting beams with a maximum capacity of up to 35 t and six lifting points.

HYDRAULIC PPVC MOULD

2022 SRI LANKA



INDEX

1. Definition of our business
2. Services
3. Key figures
4. Featured projects
5. Location and contact

SUPPLY:



A total of 6 moulds for the production of Prefabricated Bathroom Unites (PBU).

A total of two different sizes with 6 moulds controlled by two hydraulic units.

Monolithic construction of the bathroom walls and floor after which the casted element is turned 180°.

Inner core with hydraulic retractable system for quick demoulding without the need for conical slope.

PBU MOULDS FOR MIAMI

2022 USA



INDEX

1. Definition of our business
2. Services
3. Key figures
4. Featured projects
5. Location and contact

SUPPLY:



Two self-stressing tables of 150 x 2.4 m, with passive heads with a capacity of 110 t and its corresponding set of longitudinal and transversal formwork. Vibration by vibrotrack.

The supply includes a total of 3 wagons with portico structure on rails for a variety of tasks such as cleaning, application of release agent, strand pulling, transport of shutters, wire cutting and placement of canvas cover.

Two 'Giraffe' mobile concrete distributors with a capacity of 4 m³.

Fixed table of 150 x 4 m for the manufacture of foundation slab with hydraulic side shutter.

Four adjustable staircase moulds.

Pre-stressing equipment (stressing jack, hydraulic unit, wedges etc.).

EQUIPMENT FOR THE CONSTRUCTION OF RESIDENTIAL BUILDINGS

2022 USA



INDEX

1. Definition of our business
2. Services
3. Key figures
4. Featured projects
5. Location and contact

SUPPLY:

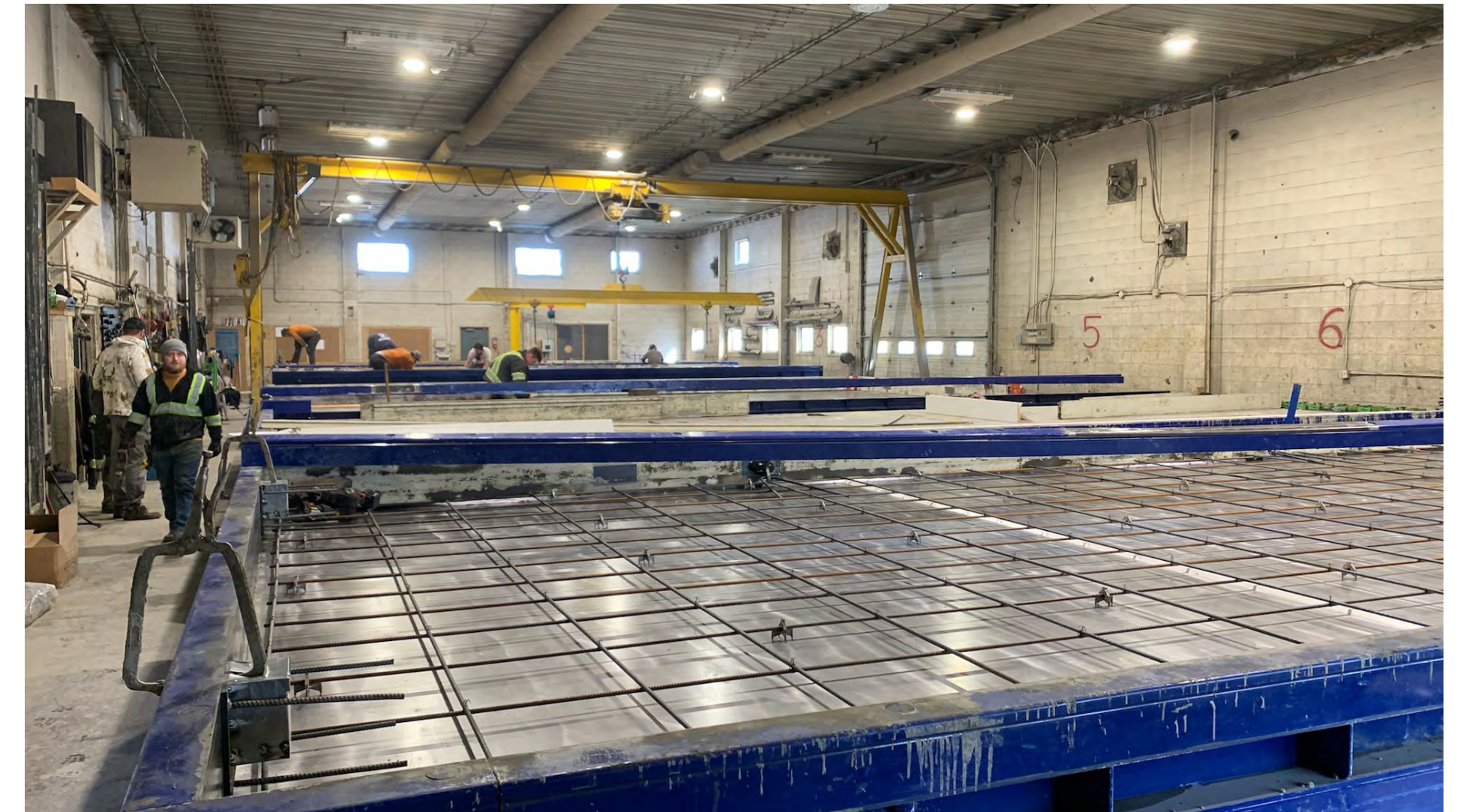


Six pallets of 40' x 15' with pneumatic vibration.

Side shutters with height supplements.

PALLETS FOR CARROUSEL LINE

2022 CANADA



Precast
Concrete
Equip



MOULDS FOR PRECAST CABLE CHANNELS

2022 SWEDEN

INDEX

- 1. Definition of our business
- 2. Services
- 3. Key figures
- 4. Featured projects
- 5. Location and contact

SUPPLY:



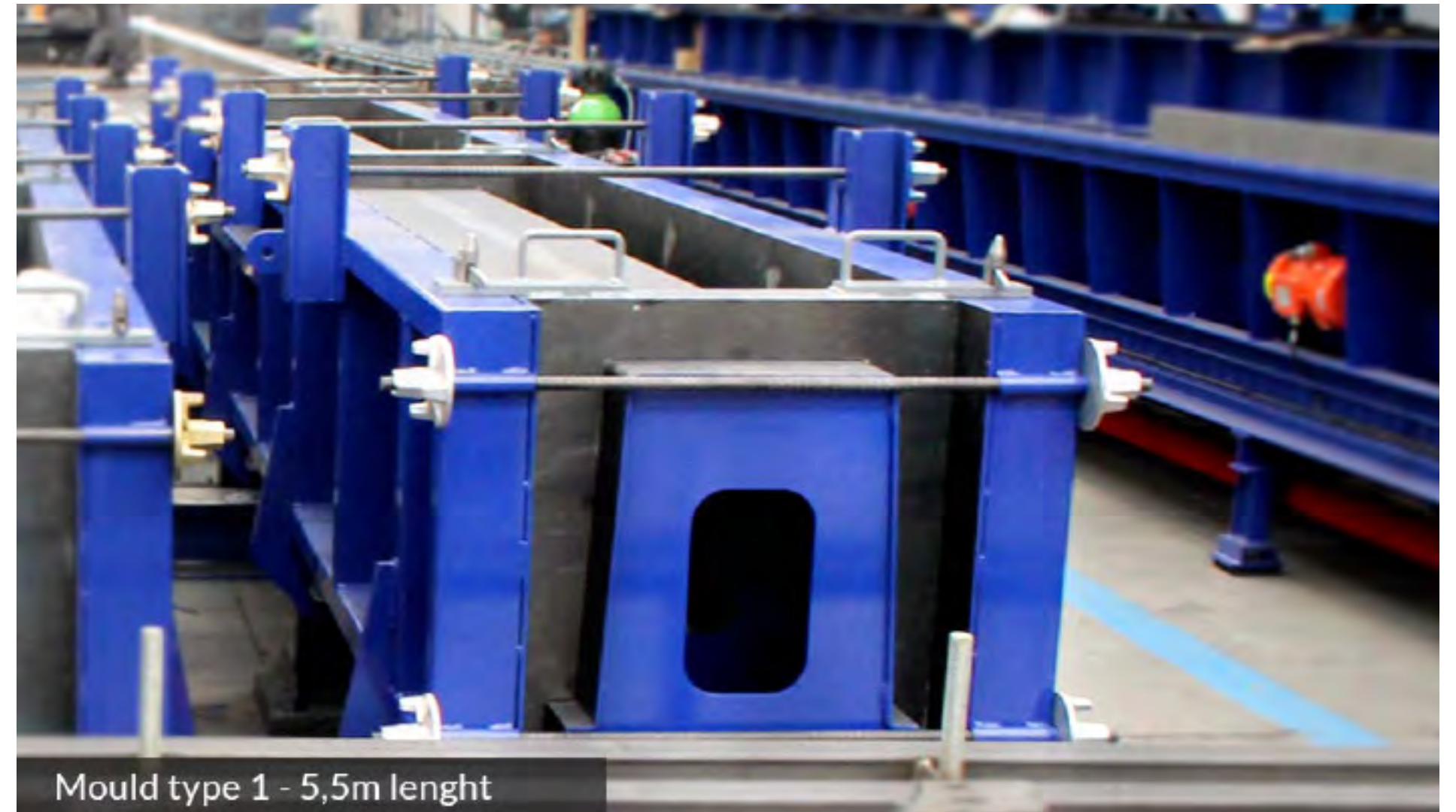
Conceived for the implementation of communication infrastructures.

Four moulds to produce different channel sections.

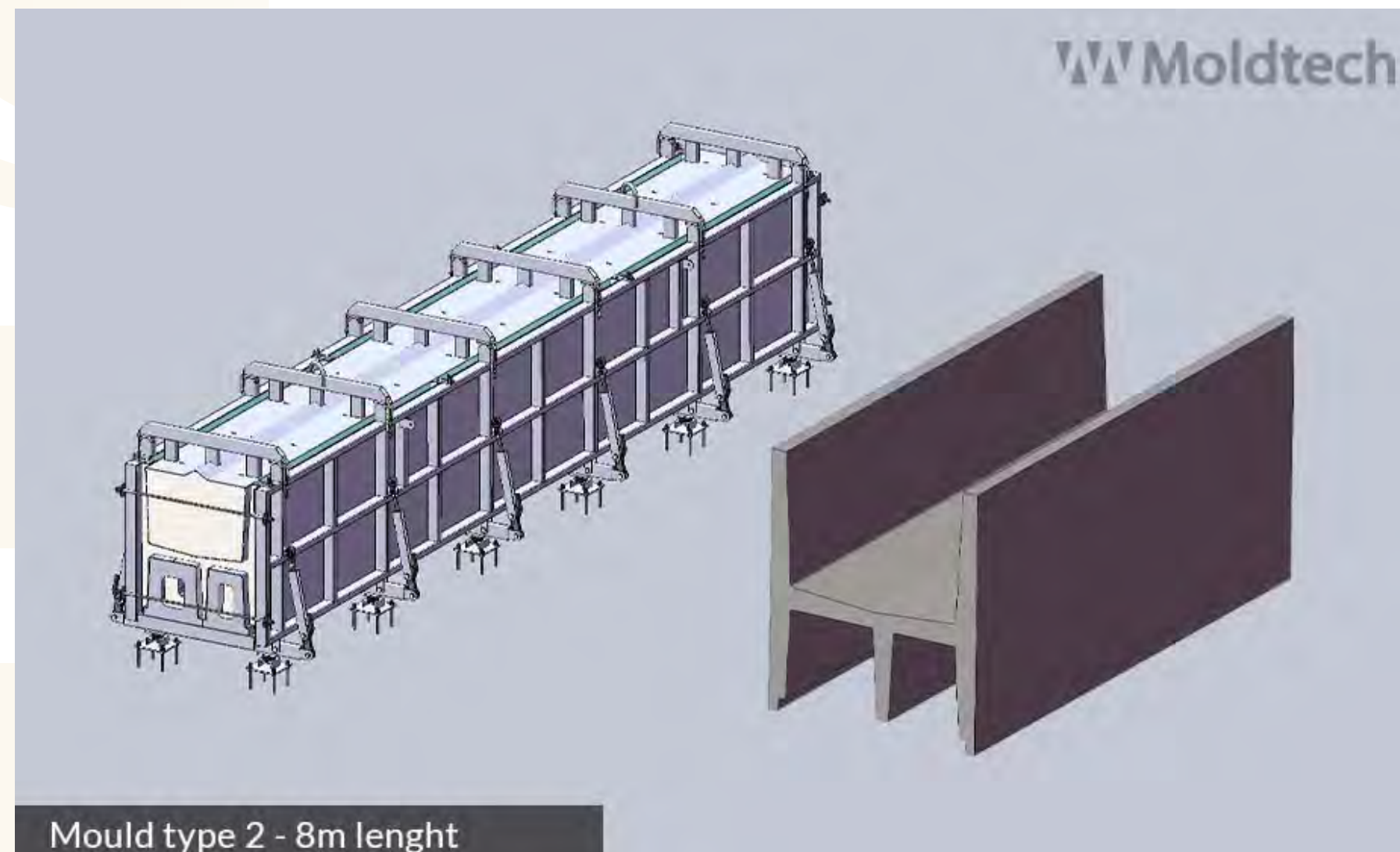
Special prefabricated elements with 'H' and 'U' shapes.

Daily production: 2-7 pieces, using intermediate dividing shutters.

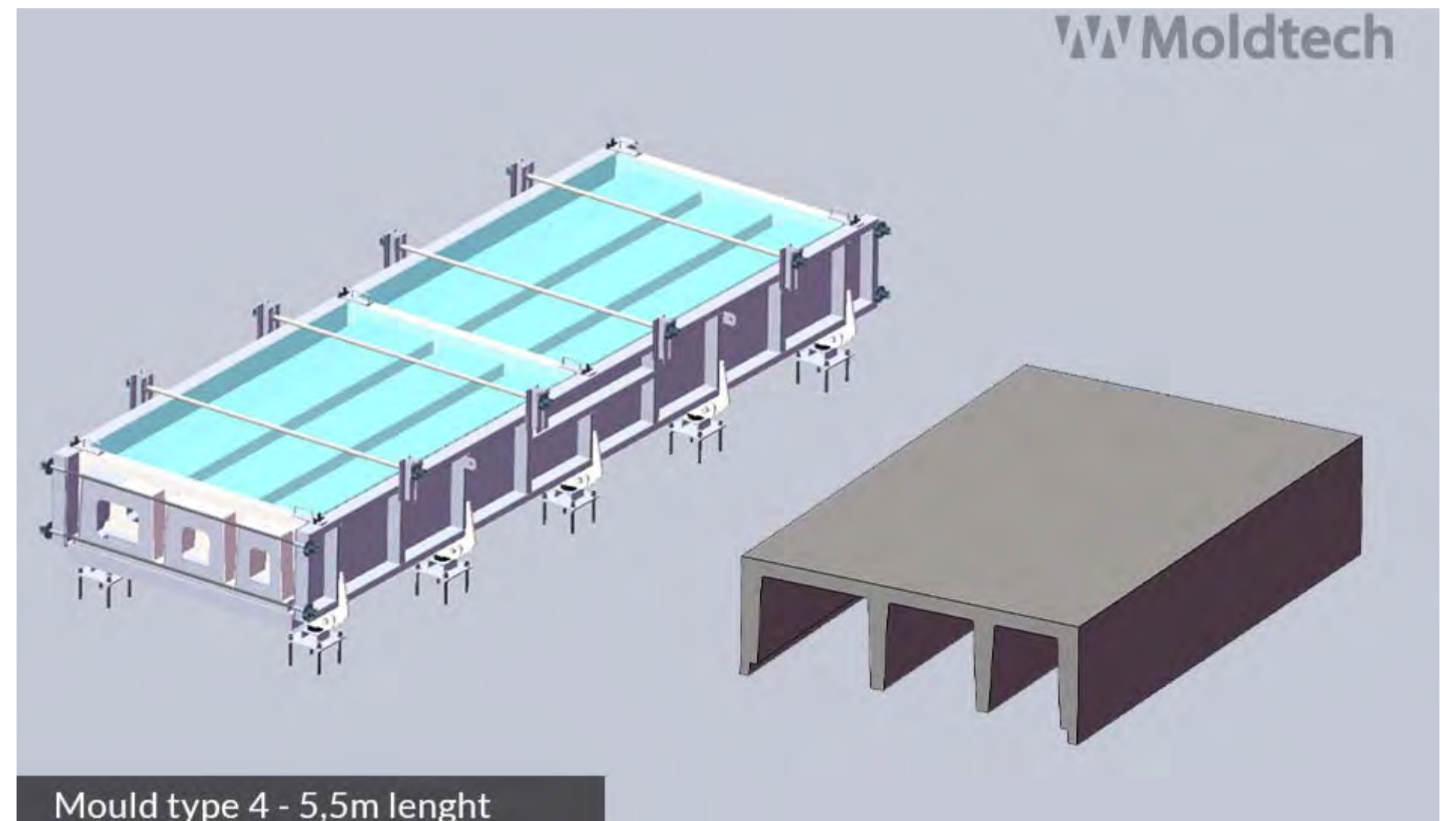
Accessories: vibrotrack and hydraulic control unit.



Mould type 1 - 5,5m lenght



Mould type 2 - 8m lenght



Mould type 4 - 5,5m lenght

INDEX

1. Definition of our business
2. Services
3. Key figures
4. Featured projects
5. Location and contact

SUPPLY:



Mould with length of 62.5 m and with a prestressing capacity of 600 t.

Conceived for the construction of roofs of industrial buildings and warehouses.

Daily production up to 250 linear metres.

Two production lines in each mould.

Manufactures large quantity of units on the mould using longitudinal and transversal shutters.

Includes electric vibrations system and heating pipes.

Removable upper part to produce different sections of purlins.

Improved surface quality of the beams by polishing casting surface.

BATTERY MOULDS FOR PRESTRESSED JOIST BEAMS

2021 ROMANIA



INDEX

1. Definition of our business
2. Services
3. Key figures
4. Featured projects
5. Location and contact

SUPPLY:



A universal casting bed with length of 62 m and width of 1 m.

Self-supporting mould with pre-stress capacity of 800 t.

Stressing jack and de-tensioning cylinders.

'I'-beam sides with length of 30 m and 800-1000-1200-1400 mm high.

'Delta' beam sides with length of 30 m.

'L/T' beam sides with length of 16 m.

INSTALLATION FOR INDUSTRIAL PLANT

2021 ROMANIA



INDEX

1. Definition of our business
2. Services
3. Key figures
4. Featured projects
5. Location and contact

SUPPLY:



Special moulds for rooms for residential buildings, which allow to produce precast concrete elements with different doors and windows, and to leave embedded elements.

The residential unit is constructed using “ending” modules and “intermediate” modules.

The ending modules consist of: 2 outer sides, 2 lower sides, 2 bases, 2 height supplements and 2 transversal shutters.

The intermediate modules consist of: 2 outer side panels, 2 inner side panels, 2 bases and 2 transversal shutters.

Two assembly tables.

COMPLETE RESIDENTIAL PLANT

2021 FRANCE





HYDRAULIC MOULD PPVC FOR 3D RESIDENTIAL ELEMENTS

2021 FRANCE

INDEX

1. Definition of our business
2. Services
3. Key figures
4. Featured projects
5. Location and contact

SUPPLY:



Produces 3D monolithic elements, without tapering of the walls.

Built with modular length and width adjustment to produce different sizes.

Hydraulically shrinking inner core.

Hydraulically closing of outer mould.

Includes air vibration system.

The finished element is demoulded in a record time.

The mould allows producing elements with different doors and windows position and embedded elements; it also allows special configurations according to the customer's request.

High quality monolithic 3D elements using self-compacting concrete, produced with great efficiency and flexibility.



INDEX

1. Definition of our business
2. Services
3. Key figures
4. Featured projects
5. Location and contact

SUPPLY:



Hydraulic double mould for 32 m long columns, with interchangeable casting bed plates for width range from 300 to 1200 mm.

Nylon sliding paths for smooth opening and closing.

Top ties with handle.

Possibility of manufacturing columns with corbels on 3 sides in casting lane.

Hydraulic opening/closing system.

Hydraulic unit to control all movements.

Includes air vibration system (electric vibration system also possible as optional equipment).

Mechanical locks.

'T'-beam battery mould with 2 working lines, 26 m long and 400 t of pre-stress, and with a depth of 60 cm.

HYDRAULIC DOUBLE COLUMN MOULD AND 'T'-BEAM BATTERY MOULD

2021 ROMANIA



INDEX

1. Definition of our business
2. Services
3. Key figures
4. Featured projects
5. Location and contact

SUPPLY:



The expansion of the Nassau cruise port requires the use of pre-stressed deck panels.

For the production of these panels Moldtech designed the corresponding self-stressing fixed tables prepared for a prestress force of up to 140 MT.

The panels have typically a length of 6.70 m and a width of 1.52 m. The height of the panel is either 30 or 45 cm whereas the profile can be straight or incorporating a keyway.

MOLDTECH came up with a solution which enables the same table to produce all the different panel varieties providing maximum flexibility to the client.

A total of 3 tables are being installed, each with a length of 49 m. Transversal shutters and a pneumatic vibration system complete the supply for this project.

FIXED TABLES FOR PRE-STRESSED PANELS

2021 THE BAHAMAS





NEW MOULD FOR BOX CULVERT WET CAST

2021 FRANCE

INDEX

1. Definition of our business
2. Services
3. Key figures
4. Featured projects
5. Location and contact

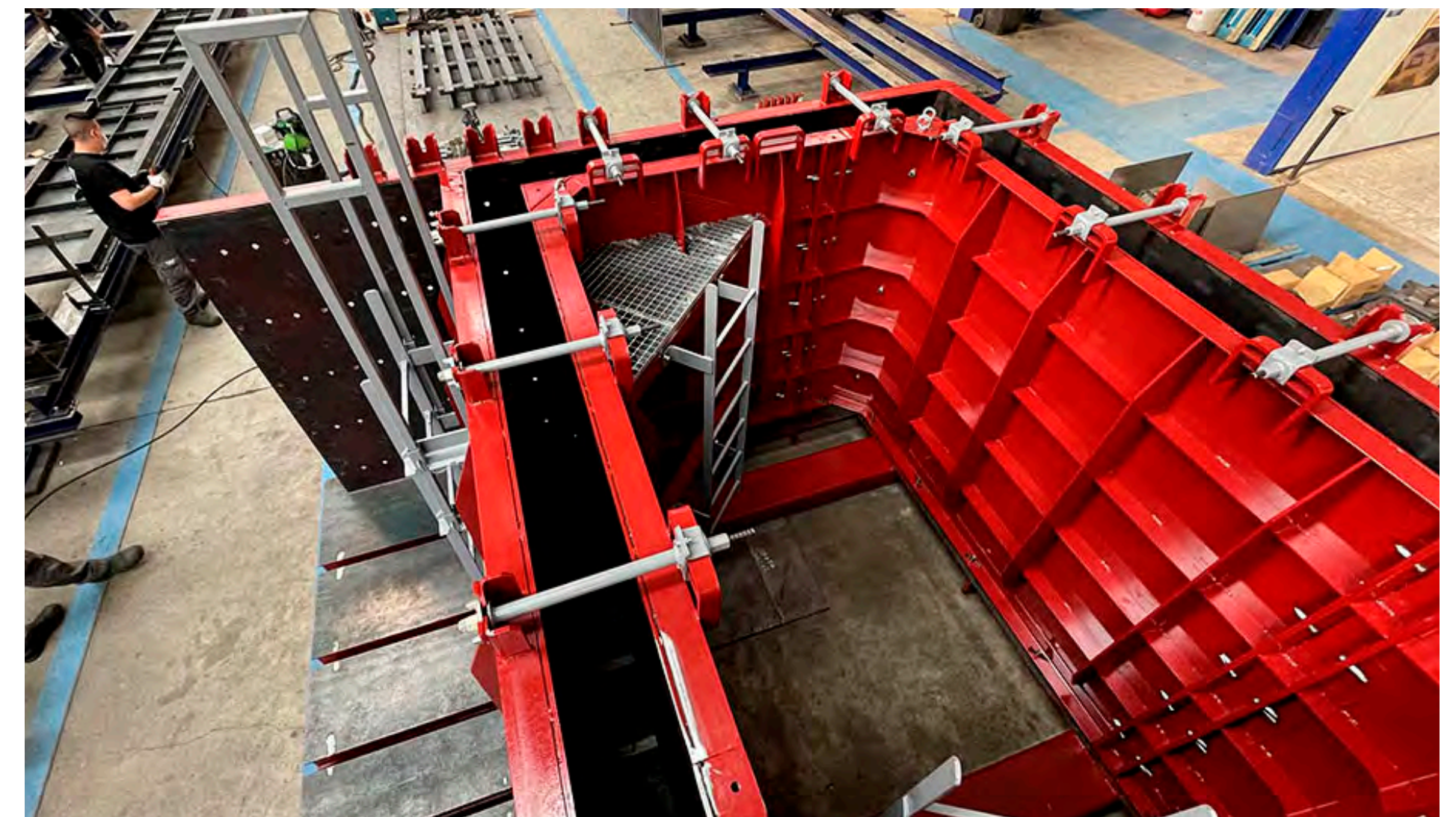
SUPPLY:



According to this specification, the mould supplied by MOLDTECH, is an easy operated mould, consisting in 2 sides in the shape of a 'L' frame allowing the sections and thickness of the element to be cast to be modified, as well as a set of 2 bases to produce 2 box culverts per day.

The minimum interior section of the mould is 3 x 2 m, and the maximum is 3 x 3 m, having intermediate sections every 0.25 m.

The mould maintains the same height in all sections, while the thickness of the precast element could be also modified from 180 to 305 mm.



INDEX

1. Definition of our business
2. Services
3. Key figures
4. Featured projects
5. Location and contact

SUPPLY:



The mould allows our clients to make panels up to 10 m long and with a height of 4 m.

With the help of mechanical extenders, the side shutters can be located inwards thereby shortening the panel length.

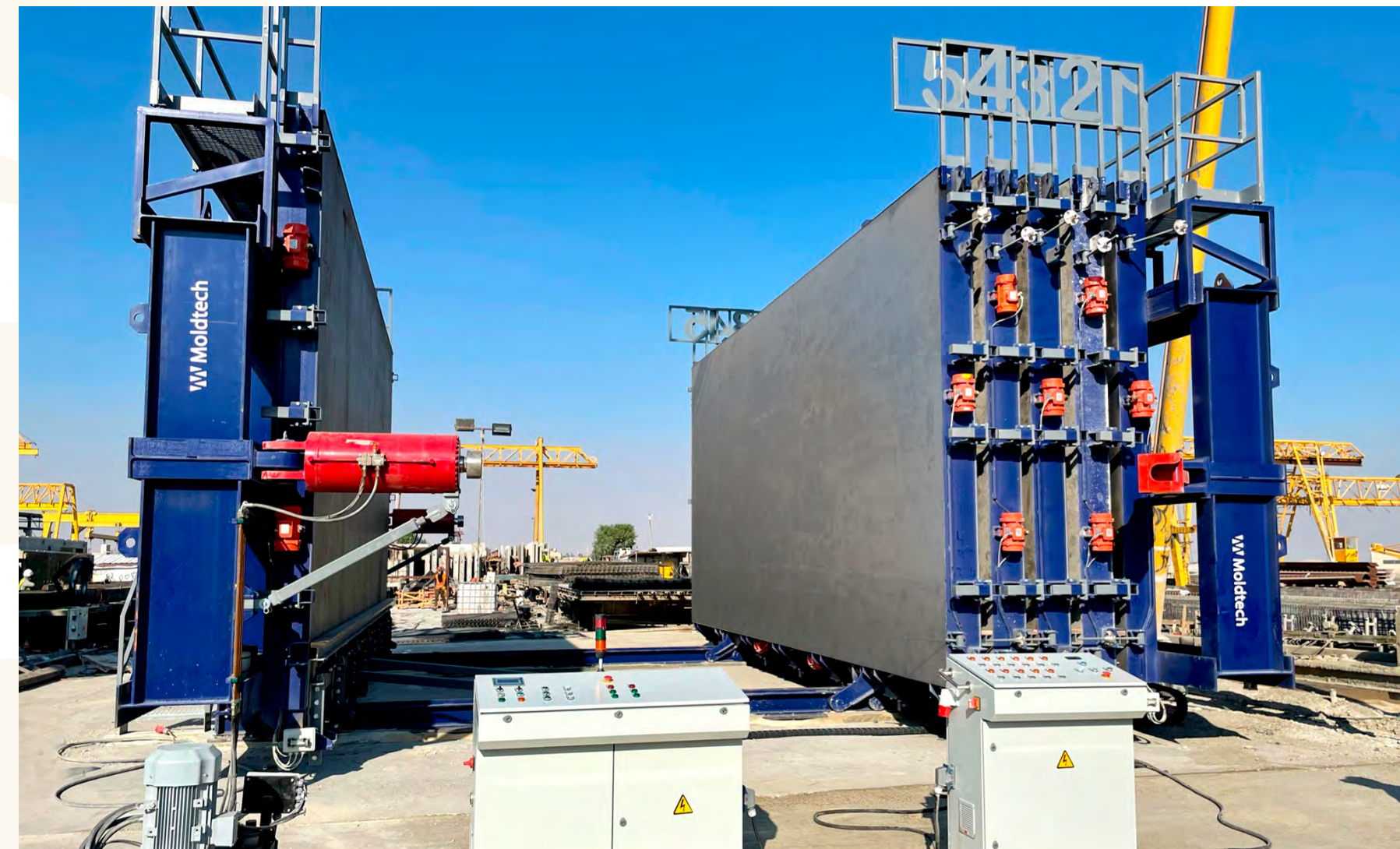
At the same time the mould allows for adjustment of the panel height using telescopic supports.

The opening and closing movements of the panels are carried out by 2 electric motors controlled from a control panel, while 2 high-capacity hydraulic cylinders are used to tighten the cavities before the concrete is poured.

At full capacity the mould can cast 10 panels at the same time with a panel thickness up to 350 mm.

VERTICAL BATTERY MOULD FOR PANELS

2021 ISRAEL



INDEX

1. Definition of our business
2. Services
3. Key figures
4. Featured projects
5. Location and contact

SUPPLY:



Four moulds for the manufacture of underpasses with a maximum height of 3.2 m to be built observing the country's norms and regulations.

Specifically, four sets of mould sides and eight bases were supplied.

This equipment provides the client with a high production capacity of up to 12 pieces per day (19.2 linear meters).

In addition, MOLDTECH designed this mould in such a way that the client can manufacture prefabricated elements of different heights as the equipment was designed in a modular way, thus offering a versatile solution capable of adapting to a wide variety of production requirements.

MOULDS FOR CIVIL WORKS

2021 ROMANIA



INDEX

1. Definition of our business
2. Services
3. Key figures
4. Featured projects
5. Location and contact

SUPPLY:



Battery mould to manufacture concrete segmental box culverts, with the capacity to produce up to 8 casted elements per day (9.6 linear metres).

Double mould for the manufacture of precast concrete wings. These pieces are placed at the beginning and at the end of the culvert and segmental culverts galleries, concluding with them the complete work of the water canalization. This mould can produce up to 4 pieces per day.

MOULDS FOR WATER CHANNELS

2021 ROMANIA



Precast
Concrete
Equip

INDEX

1. Definition of our business
2. Services
3. Key figures
4. Featured projects
5. Location and contact

SUPPLY:



Self-supporting battery of beams with 4 working lines of 66 m long and 400 t tensioning head.

De-tensioning equipment.

16 tapes.

BATTERY MOULD FOR BEAMS

2021 SPAIN



INDEX

1. Definition of our business
2. Services
3. Key figures
4. Featured projects
5. Location and contact

SUPPLY:



Two tilting tables of 36 x 4 m, controlled through a hydraulic unit and by means of a touch screen.

Remote control to execute all processes (movement system, elevation and vibration) in a simple and intuitive way, by a single operator.

The tables are designed to manufacture concrete panels in a width range from 2 to 4 m and with a wall thickness from 16 to 30 cm.

Hydraulic top shutter.

Electric vibration system.

Hydraulic power unit.

TILTING TABLES FOR PANELS PRODUCTION

2020 SPAIN



INDEX

1. Definition of our business
2. Services
3. Key figures
4. Featured projects
5. Location and contact

SUPPLY:



3D - PBU mould for bathroom modules.

Inner core and outer walls driven by a hydraulic system with hydraulic cylinders controlled from a control unit with control panel.

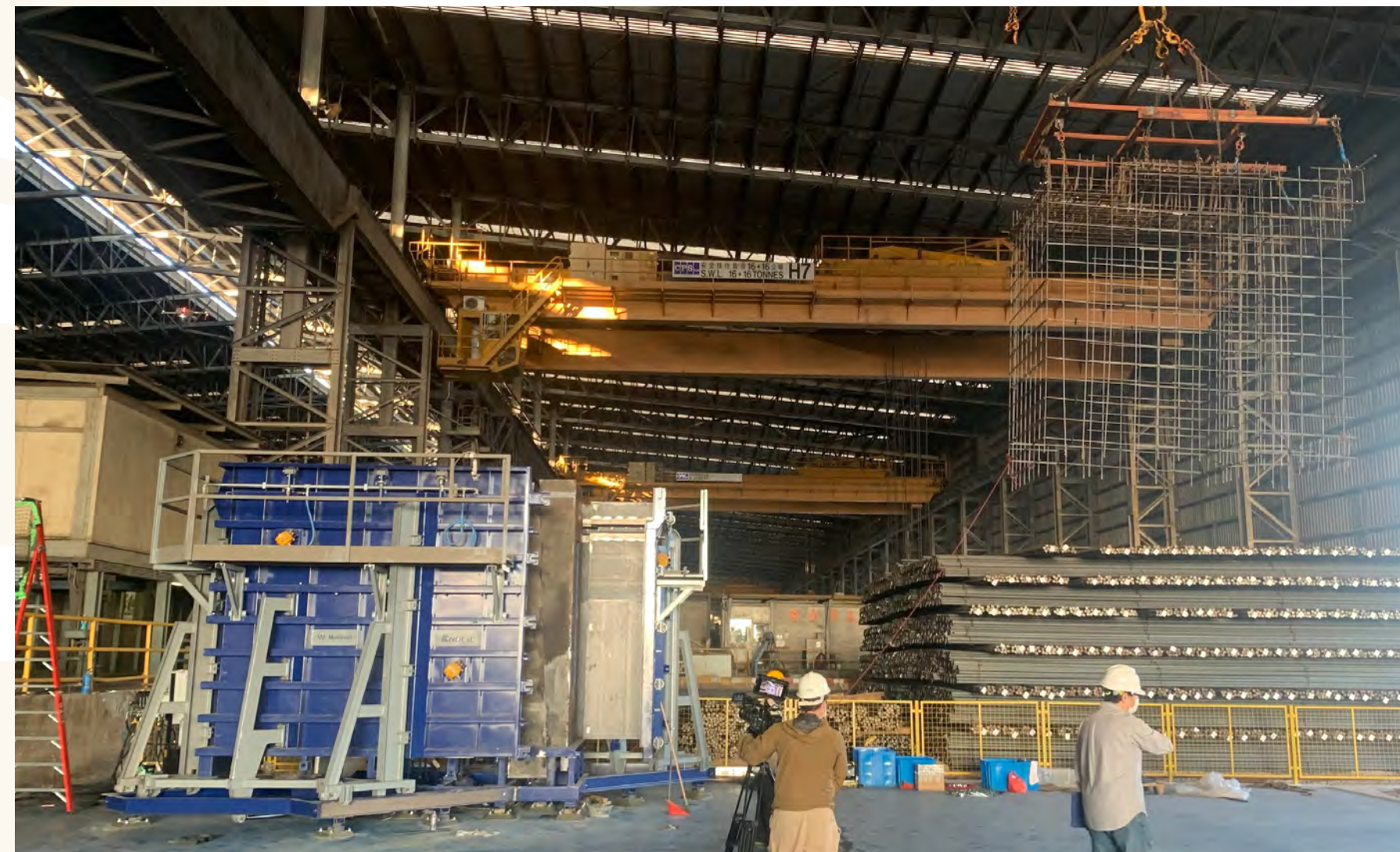
Adjustable for different part sizes.

Heating system for curing with fan heaters and integrated control system.

180° turner with a capacity for 35 t.

3D - PBU MOULD AND 180° TURNER

2020 HONG KONG



INDEX

1. Definition of our business
2. Services
3. Key figures
4. Featured projects
5. Location and contact

SUPPLY:



Serial production of concrete panels and slabs for the construction of various models of single-family houses.

MOLDETCH was the company chosen for the design, manufacture and installation of 2 tilting tables of 24 x 3.5 m.

Height adjustable bottom shutter that allows the production of panels up to 25 cm thick.

Pneumatic vibration system.

Polished casting surface with "mirror" finish for the production of very high-quality panels.

TILTING TABLES FOR RESIDENTIAL CONSTRUCTION

2020 ARGENTINA



INDEX

1. Definition of our business
2. Services
3. Key figures
4. Featured projects
5. Location and contact

SUPPLY:



DIRECTION: hydraulic, frontal.

WEIGHT: approximately 9,500 Kg (20,943 lbs), depending on models.

HOPPER CAPACITY: 3 m³

MAXIMUM ANGLE OF ENDLESS CONVEYOR: 18° to the vertical.

MAXIMUM DISPLACEMENT SPEED: 10 km/h.

MAXIMUM DISPLACEMENT SLOPE: 5°

ENGINE POWER: diesel 70 kW.

ROTATION: 180° for 120 S and 360° for 120.

'GIRAFFE' SYSTEM FOR CONCRETE TRANSPORT AND POURING

2020 PORTUGAL





RING ROAD PROJECT (I) - 'AASHTO' GIRDERS FOR BRIDGES

2020 KENIA

INDEX

- 1. Definition of our business
- 2. Services
- 3. Key figures
- 4. Featured projects
- 5. Location and contact

SUPPLY:



This project included the construction of motorway bridges using 'Aashto IV' and 'Aashto VI' pre-casted and post-tensioned girders.

The 'Aashto IV' girders have a length of approx. 30 m and weigh around 48 t whereas the 'Aashto VI' come in a length of approximately 40 m and a weight of 81 t.

The total supply for these items included 400 m of casting bed and 200 m of mould sides.





RING ROAD PROJECT (II) - SPECIAL MOULDS FOR BEAMS

2020 KENIA

INDEX

1. Definition of our business
2. Services
3. Key figures
4. Featured projects
5. Location and contact

SUPPLY:

Apart from the 'Aashto' girders moulds, the client also requested so-called 'Plank' moulds which fabricate pre-stressed hollow core deck slabs.

The cavity is made by leaving a metal insert in the concrete for which MOLDTECH designed special tools to compensate for the upward movement and ensure that they stay in place.

A total of 130 m of casting bed was delivered together with 8 hinged mould sides with height of 60cm and a length of 14.7 m.

The stressing head has a capacity of 435 t and includes slackening cylinders for the de-tensioning of the strands prior to cutting them.



INDEX

1. Definition of our business
2. Services
3. Key figures
4. Featured projects
5. Location and contact

SUPPLY:



Inner core with hydraulic shrinkage system.

The core is activated by a hydraulic cylinder to shrink and expand.

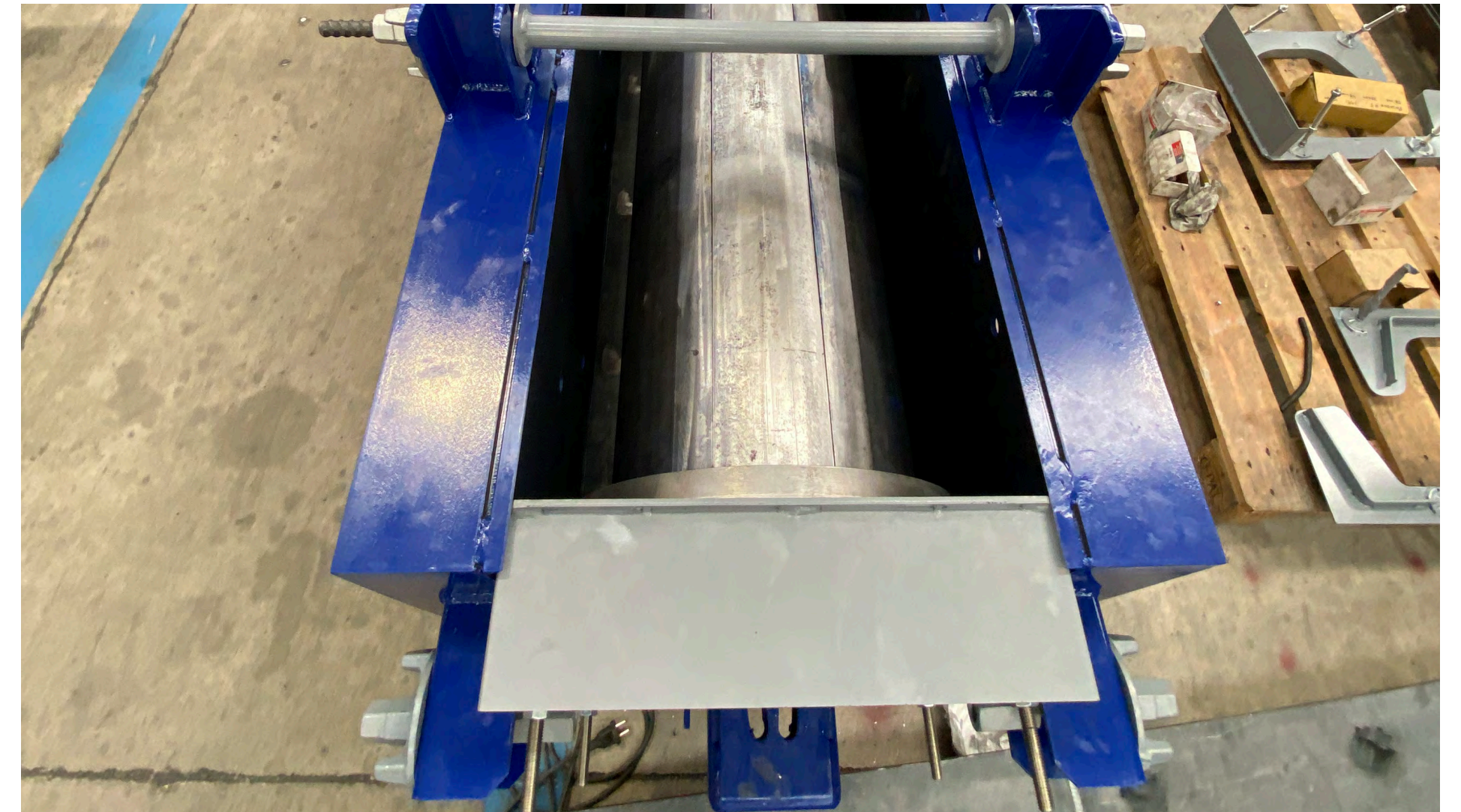
The core is inserted into the mould and expands completely.

Concrete is poured into the mould and sets.

Stripping: the outer faces are opened, the core is hydraulically contracted and pulled out to remove the finished channel piece.

SPECIAL MOULD FOR DRAIN CHANNELS

2020 POLAND





CONCRETE DISTRIBUTOR FOR PALLET CIRCULATION SYSTEM

2020 PORTUGAL

INDEX

- 1. Definition of our business
- 2. Services
- 3. Key figures
- 4. Featured projects
- 5. Location and contact

SUPPLY:



Capacity of 3 m³.

Emptying through 9 pneumatic gates, adjustable opening and discretionary selection.

Electric-pneumatic system: longitudinal movement and different track changes.

Chute and oscillating screed.

Systems controlled from a fixed control on a central platform or from a remote control.



INDEX

1. Definition of our business
2. Services
3. Key figures
4. Featured projects
5. Location and contact

SUPPLY:



This universal bed system has a fixed base system that allows the production of beams with a base up to 80 cm. The tensioning head system has slackening cylinders and the corresponding tensioning equipment, for 12 and 15 mm diameter strands.

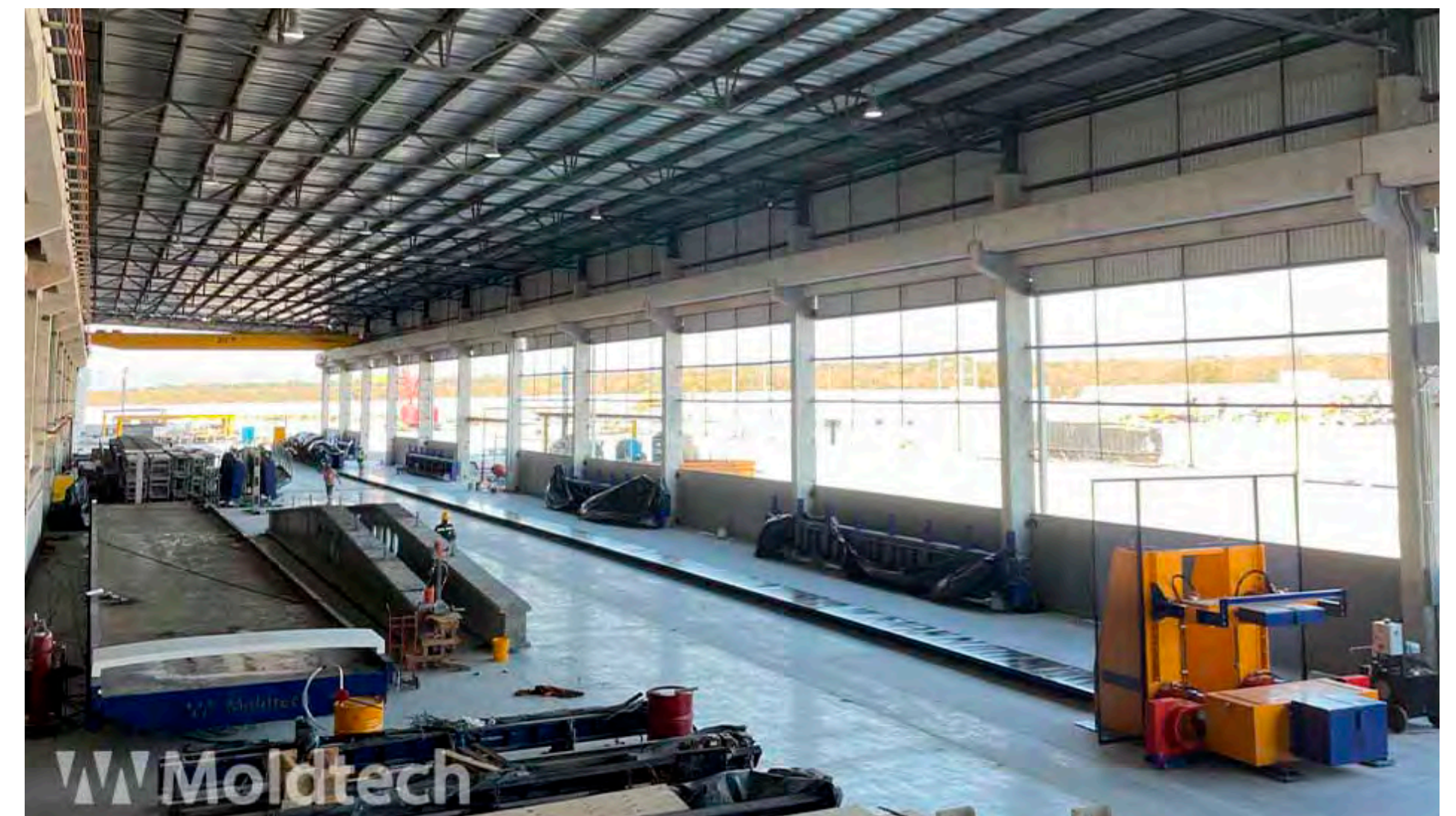
A modular length 'delta' beam mould, which will allow the customer to produce 'delta' beams up to 34 m in length. These beams will be used for the construction of industrial and logistics buildings.

A beam mould for 'L', 'T' and rectangular sections, variable width, 1 m high, and 24 m long. This mould will work on the universal prestressing bed system and will be used to produce all types of slab support beams.

To solve the drainage of industrial roofs, MOLDTECH has provided the client with a self-supporting mould of a 15 m long 'H-Channel' beam, with a fixed section of 40 x 50 cm, and a 150 t prestressing system. This channel beam will be in the lower part of the 'delta' beams to collect rainwater from the roof, and discharge through vertical pipes fixed to the columns.

UNIVERSAL PRESTRESSING BED SYSTEM OF 1000 TONS

2020 MEXICO



INDEX

1. Definition of our business
2. Services
3. Key figures
4. Featured projects
5. Location and contact

SUPPLY:



The project includes equipment to produce electric poles according to the regulations of SONELGAZ, a historic electric power and gas operator in Algeria.

SONELGAZ has been and is a promoter of electricity and gas distribution networks throughout the Algerian territory.

MOLDTECH has studied the design of the equipment meticulously, so that the client has production systems that allow user-friendly use, in addition to having the help of hydraulic opening and closing systems.

The moulds meet the regulations for prestressed electric poles type RC250, CC400 and CC630. These moulds allow to produce in three different lengths, 9, 11 and 12 m.

PRESTRESSED ELECTRIC POLES ACCORDING TO SONELGAZ REGULATIONS

2020 ARGELIA





FACTORY EXPANSION IN NORTHWEST FRANCE

2020 FRANCE

INDEX

1. Definition of our business
2. Services
3. Key figures
4. Featured projects
5. Location and contact

SUPPLY:



The MOLDTECH tilting table of 12.5 m enables the company to produce precast concrete elements of up to a thickness of 30 cm and with a load of 750 kg/m².

French precasters normally use the fixed tables as a general casting surface where all kinds of different concrete elements are casted using magnetic shuttering. These elements can be architectural, structural or façade elements. This table, with a size of 13.5 x 5 m and a load capacity of 750kg/m², features lateral shuttering of 30 cm height and offers great versatility for the production of flat and linear concrete elements.

The classic double beam mould, widely used in France but in this case features hydraulic opening and closing. This mould has a length of 8 m and will cover future production needs. Each line can produce a maximum section of 1.5 x 1.5 m. However the longitudinal mid panel can be removed allowing casting widths of 3.1 m and height up to 1.5 m.

All surfaces directly in contact with the concrete have a special polish so self-leveling concrete can be used. The mould has also gangways in accordance to the safety regulations.



INDEX

1. Definition of our business
2. Services
3. Key figures
4. Featured projects
5. Location and contact

SUPPLY:



For the manufacture of stairs with a maximum of 19 steps, 2 optional landings and a maximum width of 2 m.

The size of the steps is manually adjustable by means of spindles and phenolic formwork planks, with maximum and minimum dimensions.

The width of the stairs is adjustable by means of interchangeable wooden bottoms (not supplied with the mould) and adjustments of the height supplements incorporated in the structure.

FLEXIBLE STAIRCASE MOULD FOR RESIDENTIAL WORK

2020 PORTUGAL





INSTALLATION OF EQUIPMENT FOR CIVIL WORK

2020 BURKINA FASO

INDEX

- 1. Definition of our business
- 2. Services
- 3. Key figures
- 4. Featured projects
- 5. Location and contact

SUPPLY:

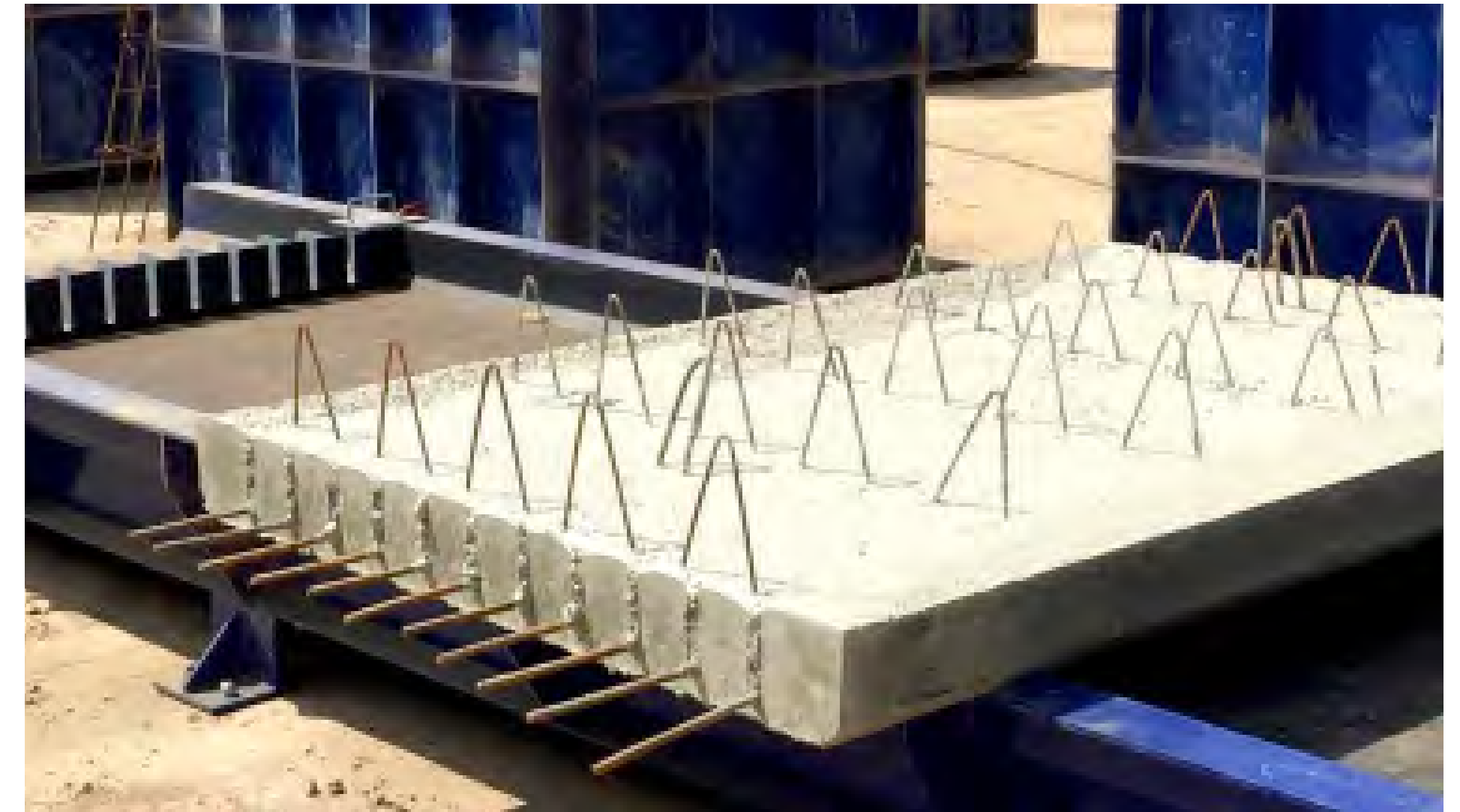


Moulds for the production of drain channels.

Fixed tables for the production of pre-slabs for bridges.

Formwork for drainage channels.

Frame steps.



INDEX

1. Definition of our business
2. Services
3. Key figures
4. Featured projects
5. Location and contact

EQUIPMENT FOR THE CONSTRUCTION OF ROAD INFRASTRUCTURES

2020 GUINEA CONAKRY



SUPPLY:



Moulds for channels for different sections.

Fixed tables for the production of top closing slabs of the channels.

Modular moulds for box-culverts for dimensions up to 3 x 2 m.

Universal bed system of 105 m length.

Moulds for 'I' beams for bridges including auxiliary equipment.

Special formworks for circular columns of viaducts and bridges.





PRESTRESSED BEAM PRODUCTION SYSTEM

2020 MOROCCO

INDEX

1. Definition of our business
2. Services
3. Key figures
4. Featured projects
5. Location and contact

SUPPLY:



70 m universal casting bed system.

Stressing heads for 600 t of pre-stress.

Moulds for 'I' and rectangular beams types, 35 m length.

Auxiliary pre-stressing equipment such as stressing jacks and de-tensioning units.





MT20 SYSTEM FOR THE DRY CAST BOX CULVERT PRODUCTION

2020 MEXICO

INDEX

1. Definition of our business
2. Services
3. Key figures
4. Featured projects
5. Location and contact

SUPPLY:



This machine consists of a modular mould to produce culverts from 1.5 x 1.5 to 3 x 4 m.

The system has 10 modular work bases and a new pressing system hydraulic system that together with an electrical vibration system distributed throughout the exterior and interior mould contour, ensures that the final product has an unmatched finish quality.

In addition to being flexible in measurements and not requiring any civil works, this system allows to be able to manufacture on site campaigns or move the mould through different factories in an environment.





COMPLETE FACTORY FOR ROAD AND BRIDGE CONSTRUCTION (I)

2019 ROMANIA

INDEX

- 1. Definition of our business
- 2. Services
- 3. Key figures
- 4. Featured projects
- 5. Location and contact

SUPPLY:



A total of 4 self-reacting prestressing lines with 125 m length and up to 1400 t capacity.

Four mould lines for prestressed bridge girders of 125 m length, with opening/closing by hydraulic cylinders.

They have an adjustable height for girders up to 2.2 m height. And with a heating system by finned pipe circuit and insulating tarpaulin covers.

'Giraffe' concrete transport and distribution vehicle with diesel engine and up to 4 m³ hopper capacity.





COMPLETE FACTORY FOR ROAD AND BRIDGE CONSTRUCTION (II)

2019 ROMANIA

INDEX

- 1. Definition of our business
- 2. Services
- 3. Key figures
- 4. Featured projects
- 5. Location and contact

SUPPLY:



Self-reacting fixed table for prestressed bridge decks.

'MT20' system for 'DRYCAST' for box culverts, up to 10 culverts daily production.

Moulds for bridge parapets.



INDEX

1. Definition of our business
2. Services
3. Key figures
4. Featured projects
5. Location and contact

SUPPLY:



A total of 5 moulds for 3D volumetric precast concrete modules for residential construction.

Adjustable sizes up to 10 x 3.5 m dimensions.

Outer walls opened by hydraulic cylinders and inner core hydraulically shrinkable, commanded from hydraulic units with control board.

Heating system with air heaters and complete temperature control system.

Turning units 180°, adjustable to different sizes of modules.

HYDRAULIC MOULDS FOR 3D RESIDENTIAL MODULES - PPVC / PBU

2019 SINGAPORE



INDEX

1. Definition of our business
2. Services
3. Key figures
4. Featured projects
5. Location and contact

SUPPLY:



A total of 24 moulds for 3D bathroom units, with hydraulically shrinkable inner core.

It allows the production of monolithic 3D elements.

Two turning machines 180°, hydraulically movable shaft to adjust to different sizes.

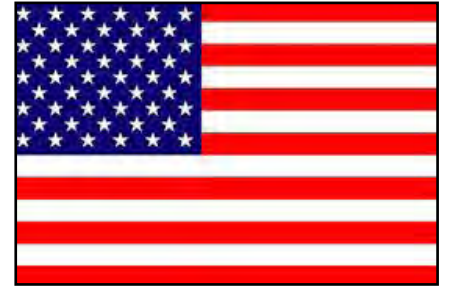
COMPLETE FACTORY FOR 3D BATHROOM UNITS - PBU

2019 SAUDI ARABIA



Precast
Concrete
Equip

SELF-SUPPORTING TILTING TABLES FOR PRESTRESSED PANELS AND SLABS MOULDS FOR 'T/L/R' BEAMS



2019 USA

INDEX

1. Definition of our business
2. Services
3. Key figures
4. Featured projects
5. Location and contact

SUPPLY:



Self-stressing tilting tables.

Dimensions 3.96 x 60.96 m (13 ft x 200 ft).

Hydraulic operated longitudinal shutters.

Pre-stressing capacity up to 280 t (620 kips).

Hydraulic open-close operation.

Total length 73.15 m (240 ft).

Capacity 640 t (1410 kips).



INDEX

1. Definition of our business
2. Services
3. Key figures
4. Featured projects
5. Location and contact

SUPPLY:



The size of the tables, 34 x 4 m was designed specifically in order to optimize the factory lay-out and make production as efficient as possible. The tables feature lower and side height adjustable shutters which allows the client to produce insulated panels up to a thickness of 1 ft.

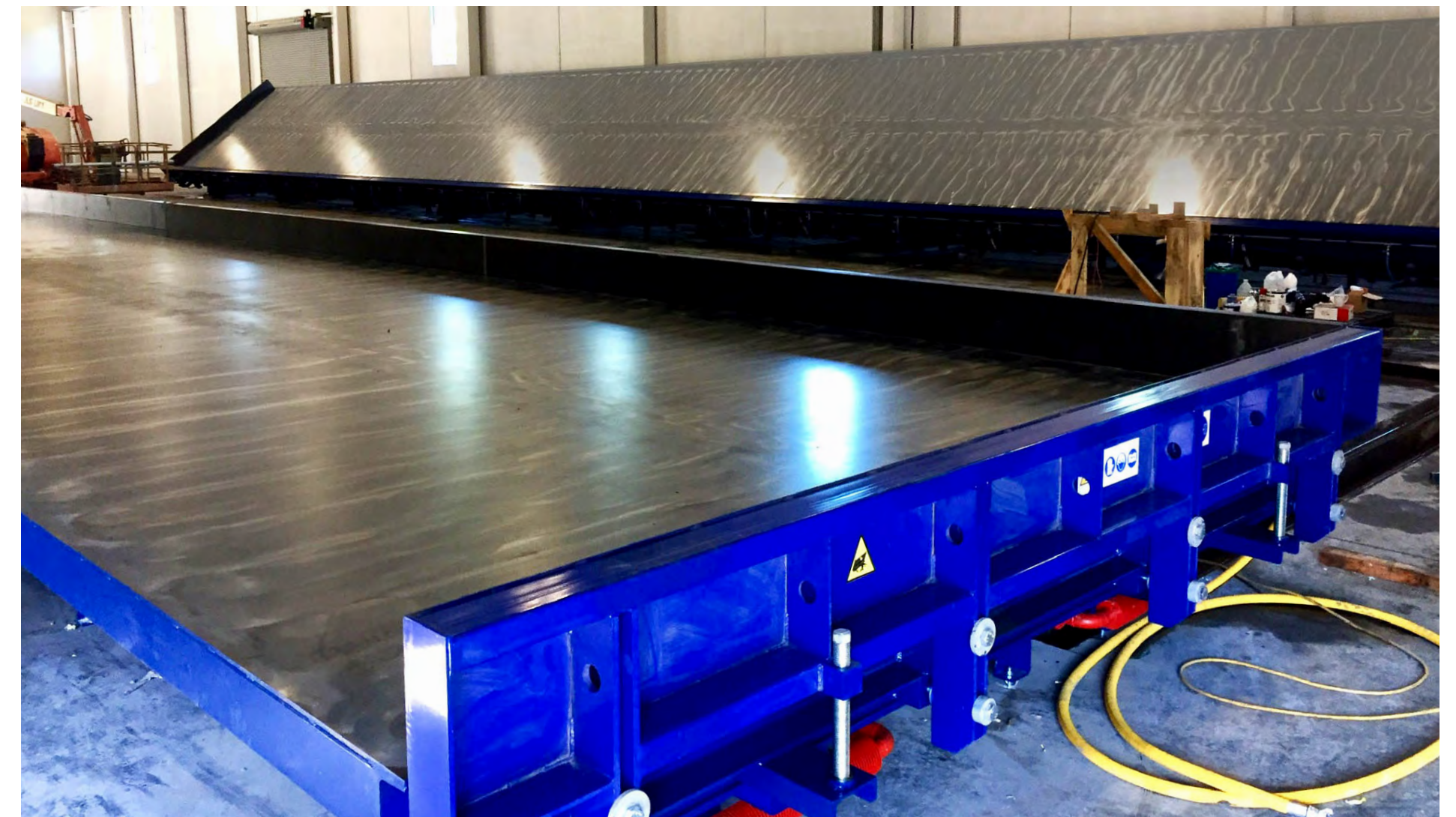
For an optimum compaction of the concrete the tables incorporate a pneumatic vibration system consisting of 21 vibrators located strategically against the under part of the casting surface.

The heating system is also located under the casting plate and consists of finned piped connected to a hot water boiler.

The supply is completed with a hydraulic unit from which one can control the tilting movement of both tables.

TILTING TABLES

2019 CANADA



INDEX

1. Definition of our business
2. Services
3. Key figures
4. Featured projects
5. Location and contact

SUPPLY:



Hydraulic double column mould with 36 m length up to 80 x 80 cm section on each line.

With multi-corbel system for upper, bottom and lateral positions.

Hydraulic system for open-close operation.

Prestressing casting bed 120 m length, multi purpose for different types of prestressed elements.

Tilting table 24 x 4 m.

With electric vibration system.

COMPLETE PRECAST PLANT (I)

2019 ROMANIA



INDEX

1. Definition of our business
2. Services
3. Key figures
4. Featured projects
5. Location and contact

SUPPLY:



Pretressing Abutments System 1000 t, for all types of prestressed girders.

Self-reacting mould for 'TT' elements, with hydraulic opening/closing of outer mould sides.

Height and thickness of the ribs can be regulated.

Self-reacting prestressing system up to 400 t.

Concrete transport and distribution vehicle 'Giraffe' 3 m³ hopper capacity.

360° rotation movement and 18° vertical inclination.

Diesel engine.

COMPLETE PRECAST PLANT (II)

2019 ROMANIA



INDEX

1. Definition of our business
2. Services
3. Key figures
4. Featured projects
5. Location and contact

SUPPLY:



Three tilting tables 16 x 4 m.

Heating system with finned pipe circuit.

Vibration system with electric vibrators and frequency converter.

Concrete bucket with hydraulic discharge gate.

TILTING TABLES

2019 POLAND





EQUIPMENT FOR THE PRODUCTION OF 'AASTHO' BEAMS

2019 SLOVAKIA

INDEX

- 1. Definition of our business
- 2. Services
- 3. Key figures
- 4. Featured projects
- 5. Location and contact

SUPPLY:



54 m of sidewalls on universal track for 1 m wide beams.

33 m of side panels on universal track for 1.5 m wide beams.

45 m of hydraulic mould for 2 m wide beams.



Precast
Concrete
Equip



EQUIPMENT FOR BEAMS PRODUCTION

2019 SPAIN

INDEX

1. Definition of our business
2. Services
3. Key figures
4. Featured projects
5. Location and contact

SUPPLY:



Prestressing abutments system 1250 t, with double passive anchor 2500 t. With hydraulically activated sleeves to block and unblock the slackening of cylinders.

Prestressing abutments system 400 t. With hydraulically activated sleeves to block and unblock the slackening of cylinders.



Preca
Con
Equip



EQUIPMENT FOR INDUSTRIAL PRODUCTION

2019 SPAIN

INDEX

1. Definition of our business
2. Services
3. Key figures
4. Featured projects
5. Location and contact

SUPPLY:



Concrete distributor 3 m³ capacity with oscillating screed. Double control platform, concrete distribution by 9 independently activated pneumatic gates. Sideways motion of hopper on crane system and portal crane structure with hydraulic sideway shifter for changes of tracks.

Transport wagon for finished panels, with up to 24 t capacity.

Self-reacting prestressing casting bed with 600 t capacity and 75 m length, with interchangeable baseplates.

Mould for 'T' beams with modular height adjustment 1-1.2 m.



INDEX

1. Definition of our business
2. Services
3. Key figures
4. Featured projects
5. Location and contact

SUPPLY:



New fixed table of 75x2.40 m size for the production of non-prestressing pre slab, to use in residential buildings.

Supplied with a system of hydraulically adjustable sides, which allows to quickly adjust the height of the pre slab or the panels to be produced. The thickness is variable from 50 to 200 mm.

With a polishing completion of the sheet that is in contact with the self-levelling concrete, which ensures a perfect finish of the exposed face of the slab.

NEW SPECIAL FIXED TABLE FOR PRESLAB

2019 FRANCE



INDEX

1. Definition of our business
2. Services
3. Key figures
4. Featured projects
5. Location and contact

SUPPLY:



Six 180° hydraulic turning machines for 3D elements up to 40 t (88,200 lbs) weight.

Designed to meet the minimum and maximum dimensions of the 3D concrete modules.

Equipped with all visual and acoustic safety systems.

All movements are controlled by a hydraulic pump unit with a control board with all necessary safety switches.

HYDRAULIC TURNERS

2018 SINGAPORE





'MT20' DRY CAST BOX CULVERT EQUIPMENT

2018 INDIA

INDEX

- 1. Definition of our business
- 2. Services
- 3. Key figures
- 4. Featured projects
- 5. Location and contact

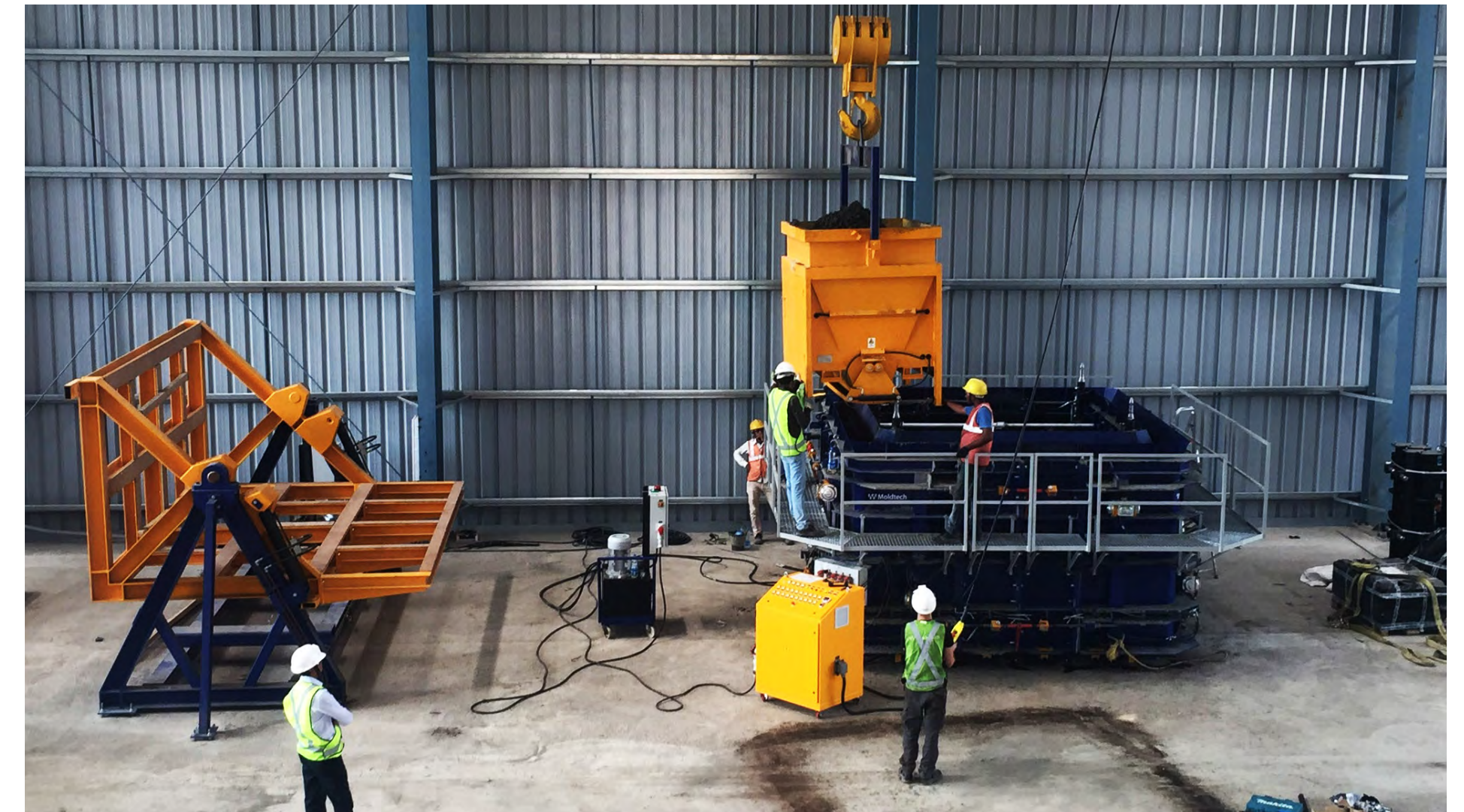
SUPPLY:



'MT20' mould for making dry cast box culverts with capacity for 11 different sizes ranging from 1.8 m (5.9 ft) span x 1.5 m (4.9 ft) rise up to 3 m (9.8 ft) span x 3 m (9.8 ft) rise.

All with a length of 2 m (9.8ft).

Productivity of 25 culverts in 2 work shifts.



PLANT FOR THE PRODUCTION OF PRECAST POWER TRANSFORMATION STATIONS



2018 MOROCCO

INDEX

- 1. Definition of our business
- 2. Services
- 3. Key figures
- 4. Featured projects
- 5. Location and contact

SUPPLY:



Turn-key project.

Four tilting tables for the production of the wall panels.

Table for the production of the roof slab.

Book type table for the production of the floor slab.



Precast
Conc
Equip



CARROUSEL LINE FOR HOLLOW CORE COLUMNS (I)

2018 INDIA

INDEX

1. Definition of our business
2. Services
3. Key figures
4. Featured projects
5. Location and contact

SUPPLY:



Carrousel for the production of 250 hollow core columns per day.

Columns of length from 2.6 to 3.6 m (8.6 x 12 ft) and width between 25 and 90 cm (0.98 x 2.12 ft) (1 to 3 cores).

Totally automated line consisting of 56 pallets including hydraulic system for the positioning of side shuttering and inserting and extraction of the cores.

The line features double station for pouring, vibrating and screeding.





CARROUSEL LINE FOR HOLLOW CORE COLUMNS (II)

2018 INDIA

INDEX

1. Definition of our business
2. Services
3. Key figures
4. Featured projects
5. Location and contact

SUPPLY:



Carrousel for the production of 250 hollow core columns per day.

Columns of length from 2.6 to 3.6 m (8.6 x 12 ft) and width between 25 and 90 cm (0.98 x 2.12 ft) (1 to 3 cores).

Totally automated line consisting of 56 pallets including hydraulic system for the positioning of side shuttering and inserting and extraction of the cores.

The line features double station for pouring, vibrating and screeding.





CARROUSEL LINE FOR HOLLOW CORE COLUMNS (III)

2018 INDIA

INDEX

- 1. Definition of our business
- 2. Services
- 3. Key figures
- 4. Featured projects
- 5. Location and contact

SUPPLY:



Carrousel for the production of 250 hollow core columns per day.

Columns of length from 2.6 to 3.6 m (8.6 x 12 ft) and width between 25 and 90 cm (0.98 x 2.12 ft) (1 to 3 cores).

Totally automated line consisting of 56 pallets including hydraulic system for the positioning of side shuttering and inserting and extraction of the cores.

The line features double station for pouring, vibrating and screeding.



INDEX

1. Definition of our business
2. Services
3. Key figures
4. Featured projects
5. Location and contact

SUPPLY:



Two complete beds with stressing heads of 1000 t (2,204 KIPS).

Fixed table for pre-slabs of 70 m (230 ft).

Fixed table for the production of retaining walls of 15 x 2.5 m (49.2 x 8.2 ft).

Two "Giraffe" units for transport and pouring of the concrete.

'MT20' equipment for the production of dry cast box culverts of sizes 1 x 1 up to 3 x 4 m (9.1 x 13.1 ft).

COMPLETE FACTORY IN MEDELLÍN FOR THE PRODUCTION OF PUBLIC WORKS ELEMENTS (I)

2018 COLOMBIA



INDEX

1. Definition of our business
2. Services
3. Key figures
4. Featured projects
5. Location and contact

SUPPLY:



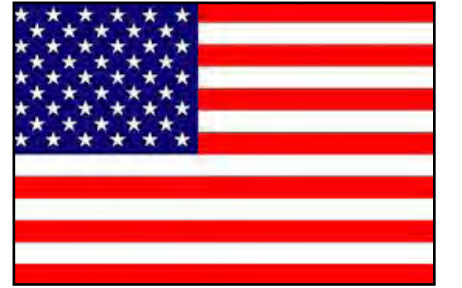
Two 'I' beam moulds of 45 m (146.7 ft) length and height of 2.20 m (7.26 ft).

COMPLETE FACTORY IN MEDELLÍN (II) - 'I'-BEAM MOULD FOR ROADS AND BRIDGES

2018 COLOMBIA



Precast
Concrete
Equip



POURING BUCKETS AND BOX CULVERT TURNER FOR JENSEN PRECAST

2017 USA

INDEX

- 1. Definition of our business
- 2. Services
- 3. Key figures
- 4. Featured projects
- 5. Location and contact

SUPPLY:



Two pouring buckets with electric vibrator and a motorized ruler, controlled by remote control.

Turning device with capacity up to 30 t (66,100 lbs) for safely turning box culverts 90°.



INDEX

1. Definition of our business
2. Services
3. Key figures
4. Featured projects
5. Location and contact

SUPPLY:



Two tilting tables with dimensions of 11.8 x 4 m (38.8 x 13.14 ft) for manufacturing façade panels.

Lower shuttering band with height adjustment.

Magnetic shuttering formworks.

Magnetic frame system for plywood shuttering.



TILTING TABLES AND SHUTTERING FORMWORKS

2017 PHILIPPINES



Precast
Concrete
Equip

INDEX

1. Definition of our business
2. Services
3. Key figures
4. Featured projects
5. Location and contact

SUPPLY:



Self-supporting steel structure with a capacity of 800 t (1,760 KIPS) of pre-stress, and a length of 70 m (230 ft).

25 m (82 ft) modular mould for the production of 'I' girder.



SELF-SUPPORTING SYSTEM FOR BRIDGE GIRDERS

2017 HONDURAS



INDEX

1. Definition of our business
2. Services
3. Key figures
4. Featured projects
5. Location and contact

SUPPLY:

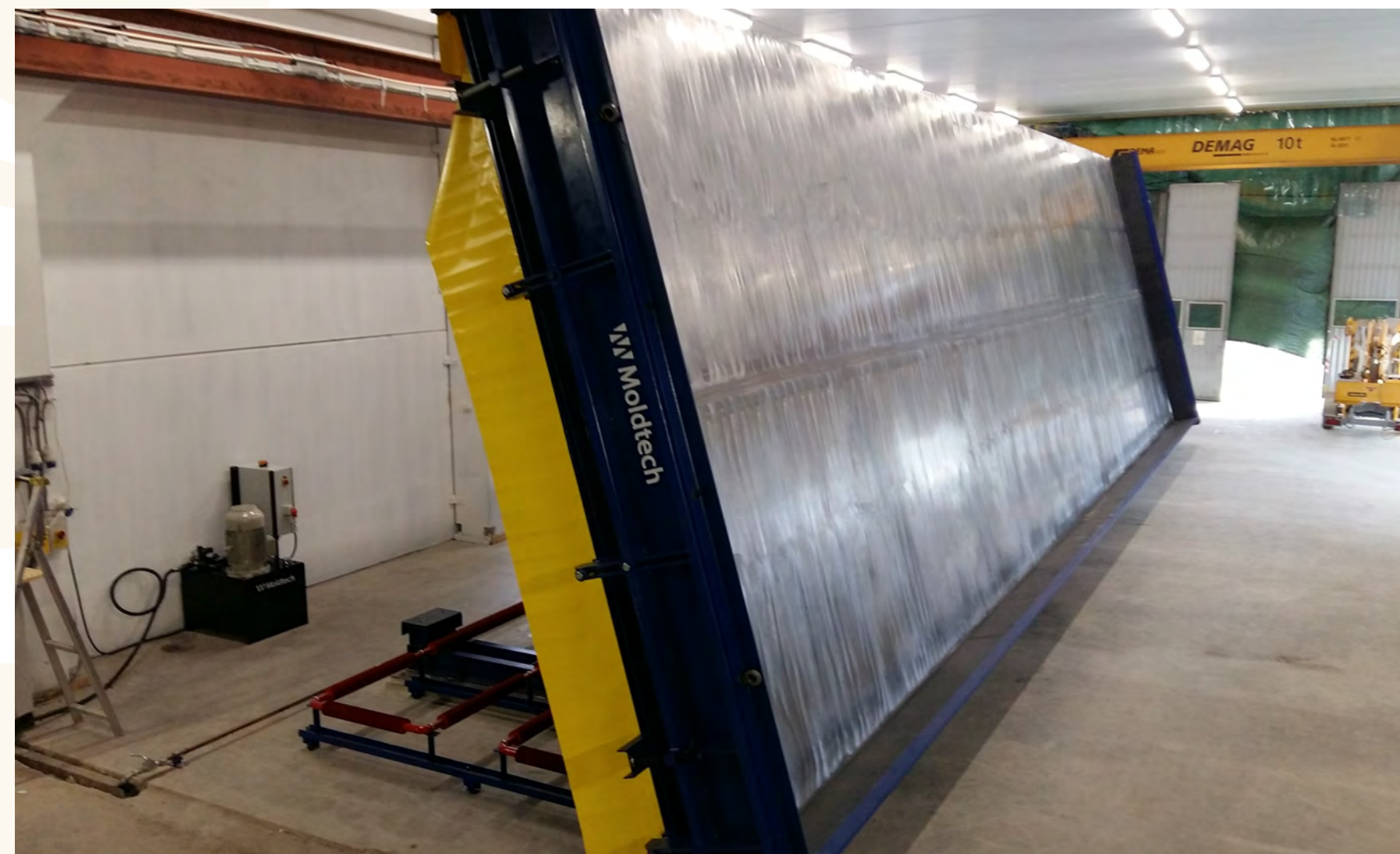
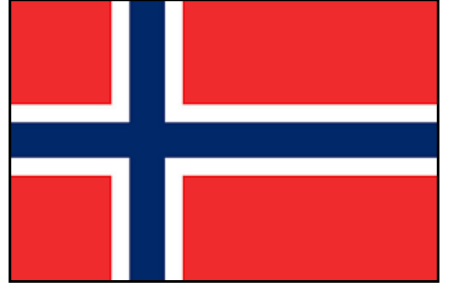


Tilting table of 16 x 4.5 m (52.4 x 14.7 ft) with automatic vibration and heating.

Set of frames with magnetic fixation for wood formwork.

TILTING TABLE FOR CLOSURE PANELS

2017 NORWAY



INDEX

1. Definition of our business
2. Services
3. Key figures
4. Featured projects
5. Location and contact

SUPPLY:



Automatic machines for filling and cleaning of tables and final product storage.

Tilting table of 42 x 3 m (137.7 x 9.8 ft).

AUTOMATIC MACHINES FOR CHAIN PRODUCTION OF PRECAST PANELS

2017 ARGENTINA



Precast
Concrete
Equip

INDEX

1. Definition of our business
2. Services
3. Key figures
4. Featured projects
5. Location and contact

SUPPLY:



Self-stressing mould of 134 m (440 ft) in length and 4.3 m (14 ft) in width for 'TT' slabs.

Tensioning capacity of 450 t (992 KIPS).

MOULD FOR 'TT' SLABS

2017 CANADA



INDEX

1. Definition of our business
2. Services
3. Key figures
4. Featured projects
5. Location and contact

SUPPLY:

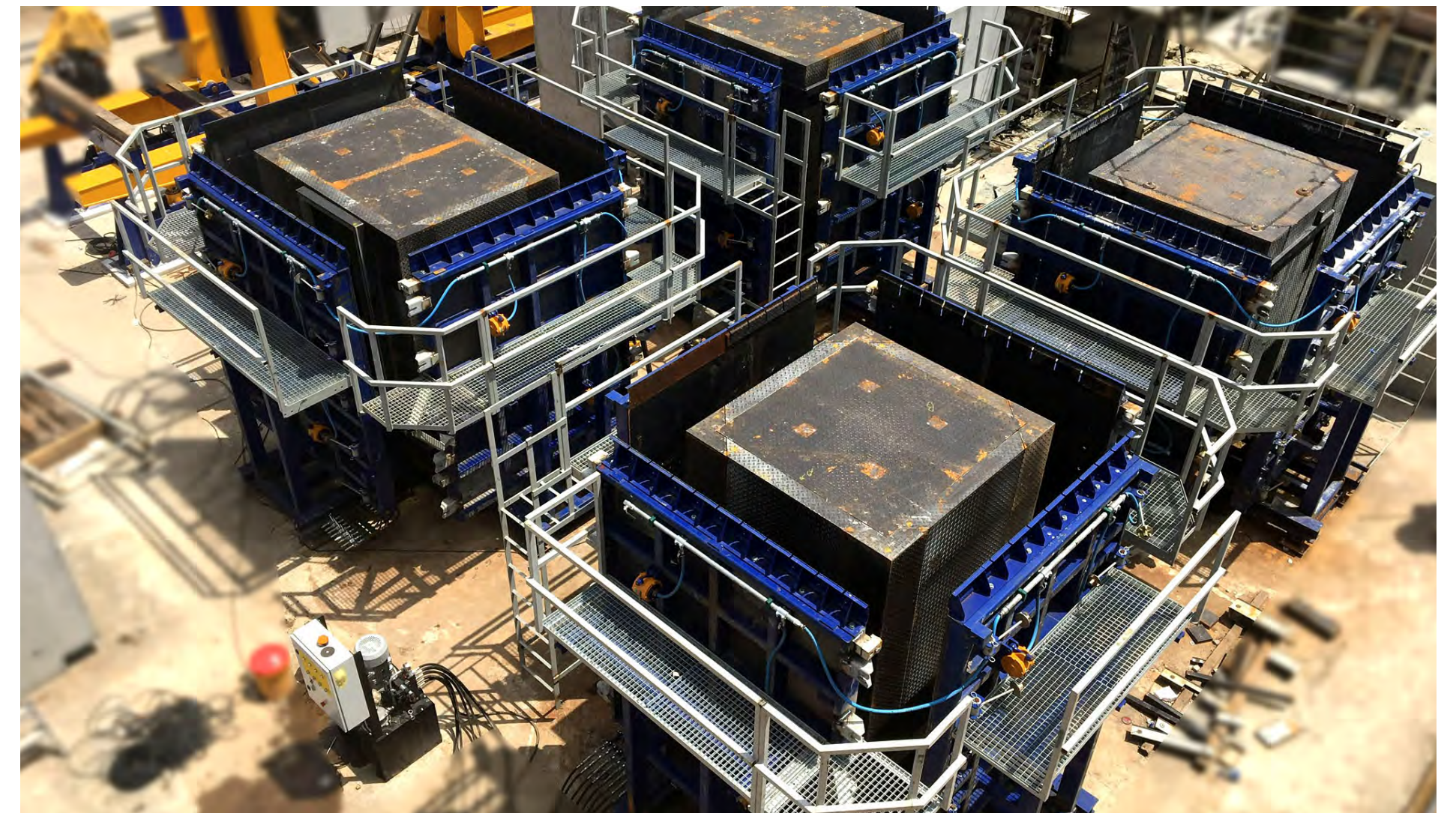
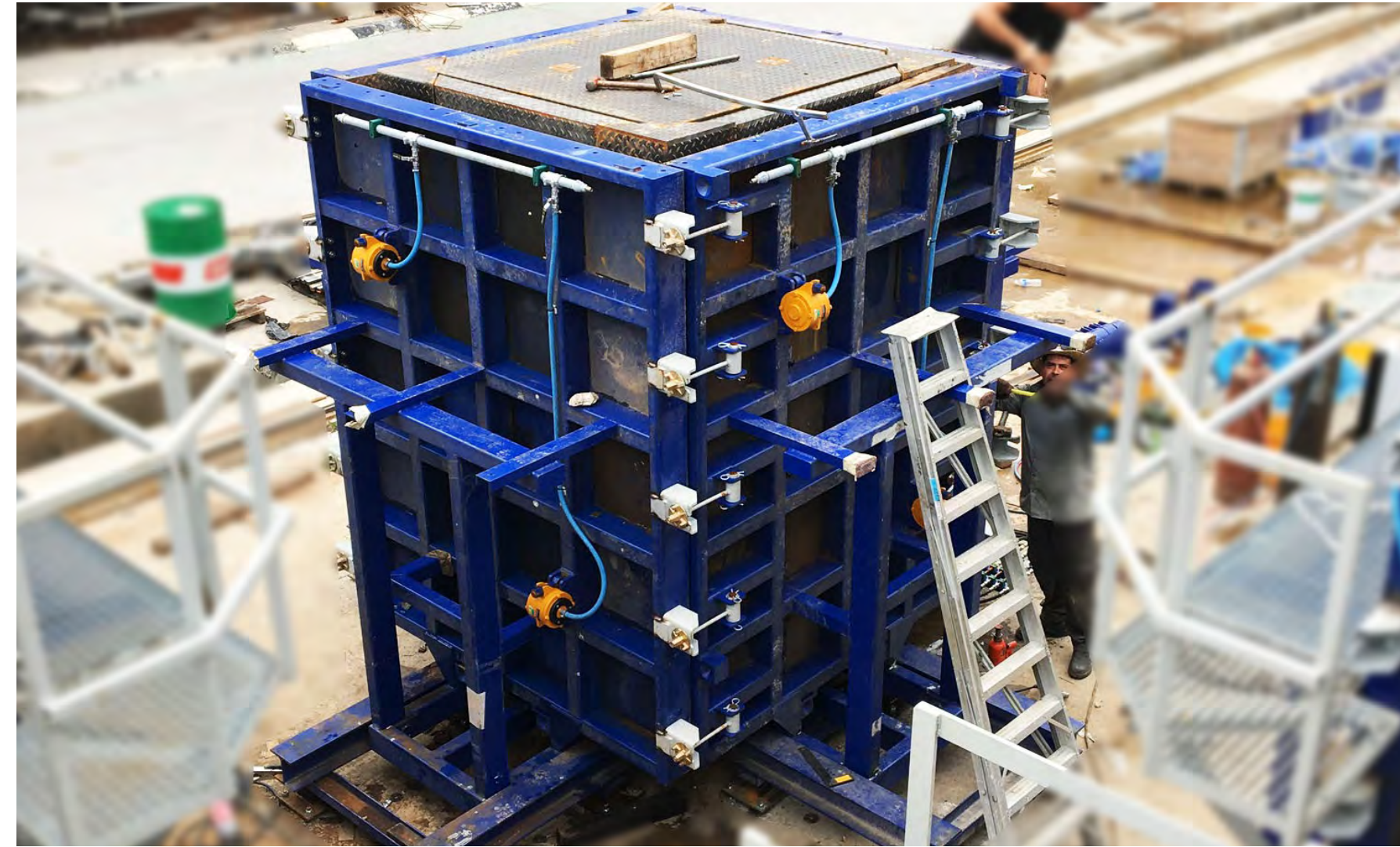


Four hydraulic moulds for the production of 3D prefabricated bathroom units of sizes 1.75 x 1.85 m (5.7 x 6 ft) inner dimensions and 2.3 m (7.5 ft) in height.

Two turning devices to turn the elements 180° with total capacity of 40 t (80,200 lbs).

3D MOULDS FOR PRECAST BATHROOMS

2017 SINGAPORE



Precast
Concre
Equipm



ARCHITECTURAL PANELS IN VERTICAL BATTERY MOULD

2016 PORTUGAL

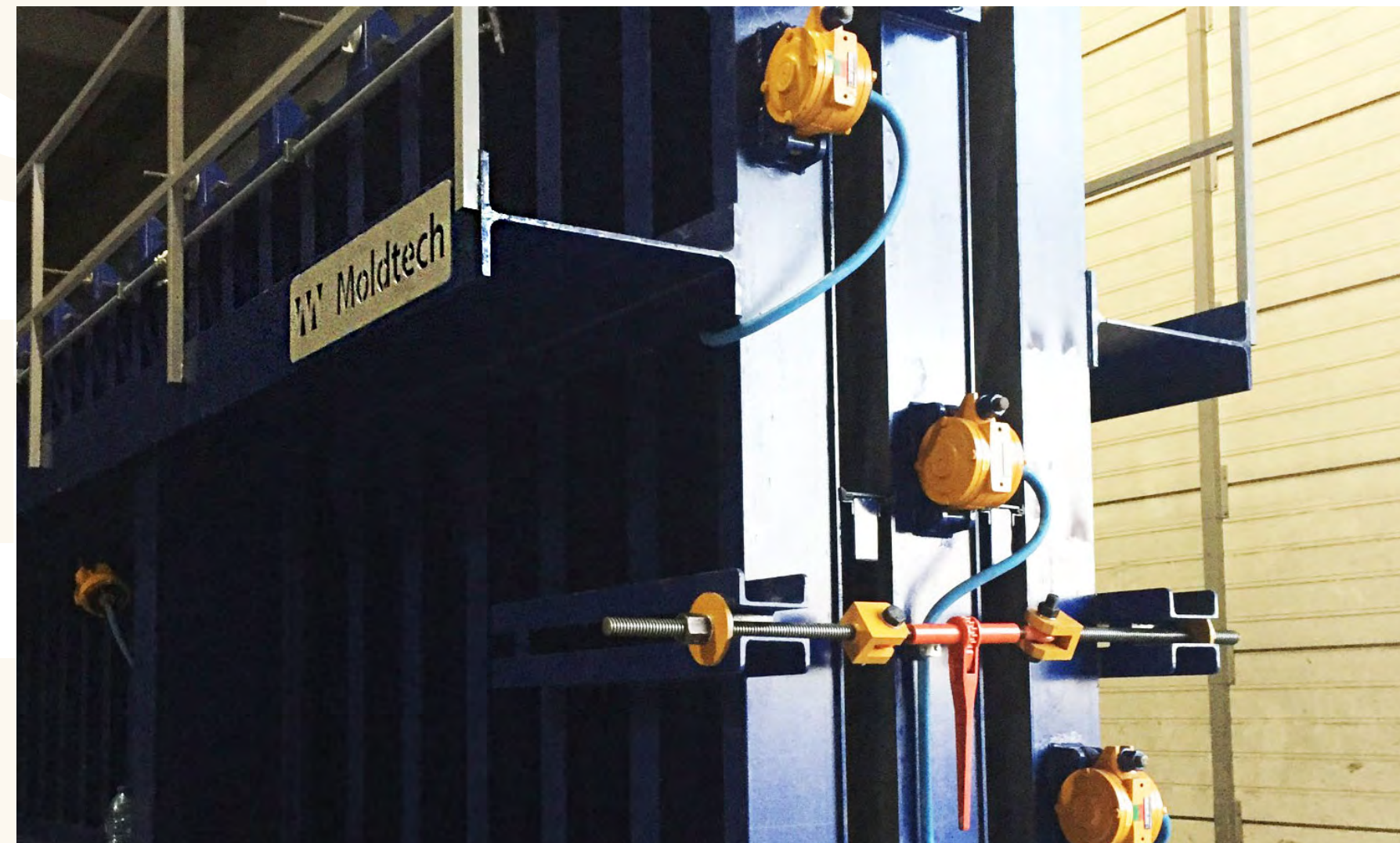
INDEX

- 1. Definition of our business
- 2. Services
- 3. Key figures
- 4. Featured projects
- 5. Location and contact

SUPPLY:



Vertical battery mould with two casting cells, for the production of architectural panels max 12 x 2.5 m (39.3 x 8.2 ft).





FACTORY FOR PRE-STRESSED ELEMENTS

2016 MALTA

INDEX

1. Definition of our business
2. Services
3. Key figures
4. Featured projects
5. Location and contact

SUPPLY:



Casting bed of 65 m (213 ft) in length and 1.2 m (3.9 ft) in width.

Tensioning heads for 600 t (1322.7 KIPS) with self-stressing structure of 65 m (213 ft) in length.

Mould sides for casting of 'Y' girder of 1 m in height and 32 m (105 ft) in length.

Mould sides for casting of 'TL' girder of 1 m (3.2 ft) in height and 21.5 m (70.5 ft) in length.

Mould sides for casting of 'H' girder of 1 m (3.2 ft) in height and 21.5 m (70.5 ft) in length, with or without side corbels.

Versatile column mould of 25 m (82 ft) in length. Hydraulic opening and closing of the mould.

Hydraulic adjusting of the column section, from 0.5 x 0.4 m (1.64 x 1.3 ft) up to 0.9 x 0.7 m (2.95 x 2.3 ft).

Three sets of corbels on four sides.



INDEX

1. Definition of our business
2. Services
3. Key figures
4. Featured projects
5. Location and contact

SUPPLY:



Two moulds for 'I' beams 60/81/101 cm (24/32/40 inches) and 25 m (32.8 ft) length.

Mould for 'TI / TL' beams (h) 119 cm (47 inches), 25 m (82 ft) length.

Double column mould 40/51 x 40/51/61 cm (16/20 x 16/20/24 inches), 35.4 m (115 ft) length.

Self-supporting mould for 'TT' slabs 60 m (196 ft) length.

Two tilting tables of 35.4 x 3.5 m (117 x 11.4 ft) and 47.2 x 2.5 m (156 x 8.2 ft).

Fixed battery mould 11 m (36 ft) for 8 beams 'T-35'.

COMPLETE FACTORY FOR INDUSTRIAL BUILDINGS (I)

2016 LIBYA





COMPLETE FACTORY FOR INDUSTRIAL BUILDINGS (II)

2016 LIBYA

INDEX

1. Definition of our business
2. Services
3. Key figures
4. Featured projects
5. Location and contact

SUPPLY:



Two moulds for 'I' beams 60/81/101 cm (24/32/40 inches) and 25 m (32.8 ft) length.

Mould for 'TI/TL' beams (h) 119 cm (47 inches), 25 m (82 ft) length.

Double column mould 40/51 x 40/51/61 cm (16/20 x 16/20/24 inches), 35.4 m (115 ft) length.

Self-supporting mould for 'TT' slabs 60 m (196 ft) length.

Two tilting tables of 35.4 x 3.5 m (117 x 11.4 ft) and 47.2 x 2.5 m (156 x 8.2 ft).

Fixed battery mould 11 m (36 ft) for eight beams 'T-35'.



INDEX

1. Definition of our business
2. Services
3. Key figures
4. Featured projects
5. Location and contact

SUPPLY:



Custom-made moulds for prison cells up to 11.6 x 6 m (38 ft x 20 ft).

Four cells.

Weight of casted element up to 60 MT (132,200 lbs).

PRISON CELLS (I)

2016 URUGUAY



Precast
Concrete
Equip

INDEX

1. Definition of our business
2. Services
3. Key figures
4. Featured projects
5. Location and contact

SUPPLY:



Custom-made moulds for prison cells up to 11.6 x 6 m (38 ft x 20 ft).

Four cells.

Weight of casted element up to 60 MT (132,200 lbs).

PRISON CELLS (II)

2016 URUGUAY





SIDES AND MOULDING FRAME FOR PRE-STRESSED 'OMEGA' BEAM

2015 SPAIN

INDEX

- 1. Definition of our business
- 2. Services
- 3. Key figures
- 4. Featured projects
- 5. Location and contact

SUPPLY:



Two sides of 66 m (216.5 ft) length with adjustable height from 385 to 900 mm (15 inches to 35 inches).

Moulding frame of 66 m (216 ft) length.

Supporting bridges for moulding frame.

Stressing heads.



Precast
Concrete
Equip

INDEX

1. Definition of our business
2. Services
3. Key figures
4. Featured projects
5. Location and contact

SUPPLY:



Molding surface length 45 m and width 2.4 m.

Tensioning heads supporting 500 t.

Heating pipe system with isolation tarpaulin.

Pneumatic vibration system.

MOULD FOR PRESTRESSED 'TT' SLAB

2015 INDIA



INDEX

1. Definition of our business
2. Services
3. Key figures
4. Featured projects
5. Location and contact

SUPPLY:



Universal casting beds and mould sides for the production of "ASSHTO type I beams with stressing heads of 600 t (1322 KIPS).

Double column moulds.

Moulds of main beams of 16 m (5.2 ft).

Self-stressing 'double T' mould of 36 m (118 ft) long and width 2.4 m (7.9 ft).

Analysis of the production process and design of factory 'lay-out'.

COMPLETE FACTORY FOR THE PRODUCTION OF (PRE-STRESSED) CONCRETE ELEMENTS FOR INDUSTRIAL AND COMERCIAL BUILDINGS AND BRIDGES

2014 HONDURAS



INDEX

1. Definition of our business
2. Services
3. Key figures
4. Featured projects
5. Location and contact

SUPPLY:



Production capacity: 30,000 apartments in 2 years.

Design of factory 'lay-out'.

Custom made design of moulds and accessories (notch boxes and corbels).

Modular mould for elevator-shaft.

Planning of logistics process: design, production, transport, commissioning in 5 months.

On site production plant.

2000 METRES HYDRAULIC BEAM MOULDS INSTALATION FOR THE PRODUCTION OF BEAMS FOR RESIDENTIAL PROJECTS

2013 INDIA



INDEX

1. Definition of our business
2. Services
3. Key figures
4. Featured projects
5. Location and contact

SUPPLY:



Four double book moulds for casting panels up to 28 cm (11 inches) consisting of natural stone, concrete layer, insulation material and concrete layer with smooth finish.

Three tilting tables 12 x 4.5 m (39.4 x 14.8 ft), with special formwork for protruding bars.

A fixed table for floor slabs.

Tailor-made manufactured frequency converter for total control of electric vibration.

'Lay-out' design and commissioning.

MANUFACTURE AND INSTALLATION OF DOUBLE BOOK MOULDS AND TILTING TABLES FOR SPECIAL PANELS

2013 ISRAEL



INDEX

1. Definition of our business
2. Services
3. Key figures
4. Featured projects
5. Location and contact

SUPPLY:



Factory capacity: yearly output of 3,000 housing units of 60 sqm (645 sqft) average size.

Equipment supplied:

Twenty-one tilting tables for wall panels of 15.5 x 3 m (50.9 x 9.8 ft).

Three fixed tables 60 x 2.25 m (197 x 7.4 ft) for floor slabs, staircase moulds, equipment for lifting, transportation and storage of finished panels, and compressed air circuit.

Factory lay out design, productivity and feasibility calculations.

Commissioning, test production and training of local staff.

TURN-KEY PROJECT FOR PRECAST PLANT FOR THE CONSTRUCTION OF 3000 RESIDENTIAL HOUSING UNITS

2012 VENEZUELA





Thank you

info@moldtechsl.es

www.moldtechsl.es



This document is confidential
©2018 Moldtech S.L.
All Rights Reserved