



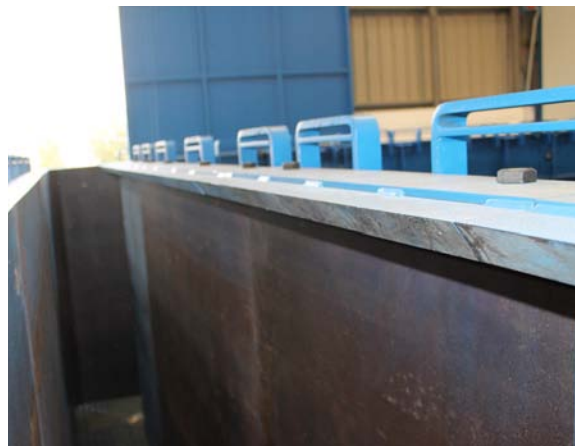
MOULD FOR FRANCE
From 2,5 x2,5m to 6x5m.
2m height.
Highly adjustable thickness:
200-250-300-350-400-500mm
Easy and quick operation.
Up to 2 pieces a day with 2
sets of bases.
Fixed parts for dovetailing
joint: no need to make any
adjustment.



Detail of panels union



Fixed joint for all sizes no adjustment required



Upper side for female joint



Base prepared for male side



Highly adjustable thickness



Inner mould

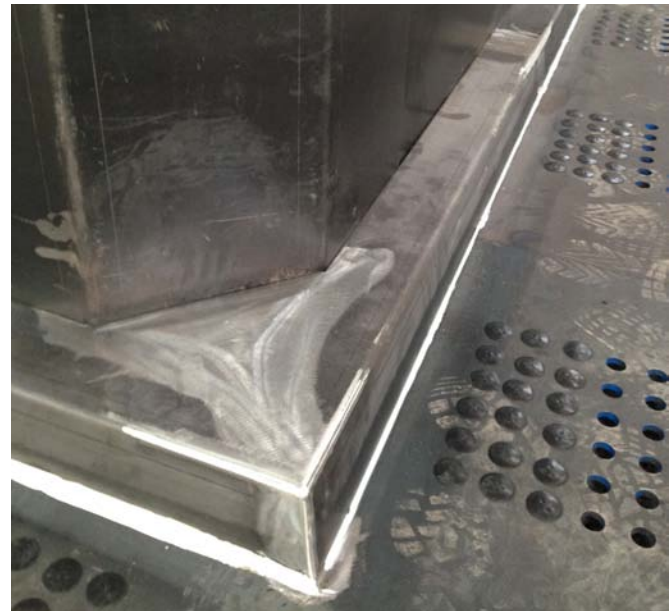




MOULD IN SPAIN

From 1,5 x 1,5m to 4x4m.
Highly adjustable thickness.
Easy and quick operation.
Up to 2 pieces a day with 2 sets of bases.

With fixed dovetailing joint:
there is no need to change the parts for making the dovetailing joint. The female is casted with the case and the male on the top



Base prepared to leave the female part of the joint of the joint





MOULD FOR POLAND
From 1,5 x2m to 4,5x4,5m.
1m height.
Highly adjustable thickness:
200 to 380mm
Easy and quick operation.
With dovetail joint.
With corbel option.
With half-frame U shape option.
Up to 2 pieces a day with 2 sets of bases.

Detail of mould for piece with optional corbel



Detail of upper fastening bars



Detail of U-shape half-frame divider



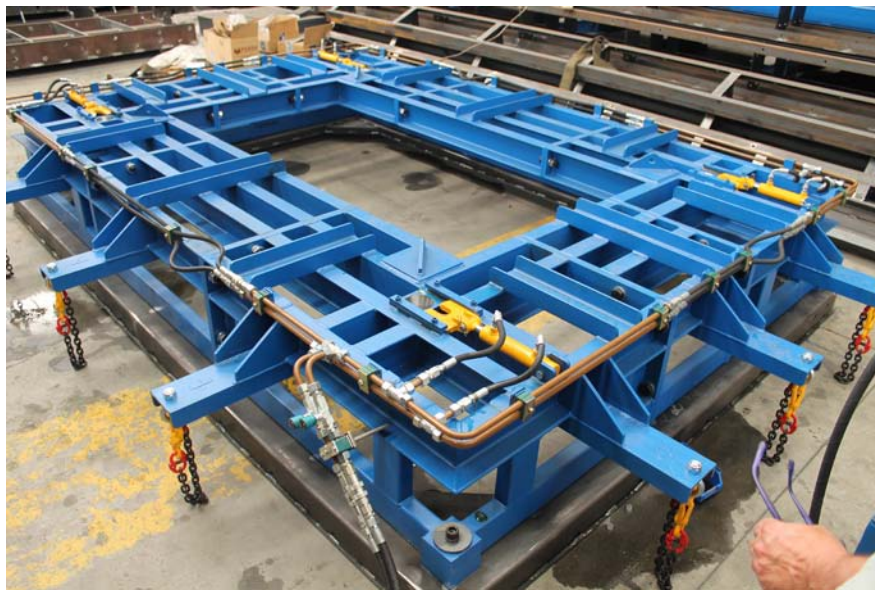
MT20 SYSTEM POLAND
From 1,5 x1,5m to 2x3m.
1m height.
Adjustable thickness 200 to 250mm.
Quick hydraulic movements.
With dovetail joint.
With corbel option.
High productivity up to 10 pieces a day.



Detail of fastening clamps



Detail of inner mould with hydraulic cylinders for upper press activation



Press frame with hydraulic clamping system



Press for making male part of dovetailing joint



Sets of bases prepared for female part dovetailing in the piece



Modular panels of 2m height

MT20 SYSTEM FOR FRANCE
From 1,5 x1,5m to 3x3m.
2m height.
Adjustable thickness.
Quick hydraulic movements.
With dovetail joint.
High productivity up to 10 pieces a day.





Device for turning box culverts 90°

For pieces up to 15TN weight

Dimensions 4,6x3,5m

